

BELGIAN ARCHITECTS TODAY

B



Lannoo



BINST ARCHITECTS

Founded by Luc Binst, the practice has almost 50 years of experience. Its multidisciplinary portfolio, with inspiringly diverse scales of projects, has been realised with an experiential approach. Between sharp edges and curved silhouettes, their building are characterised by visually light structures, which sometimes seem to be floating in the air. Inventive shapes, a great mix of materials, and a strong focus on openings are further signature features of BINST's elegant designs that create landmarks in the urban landscape. The studio, according to their statement, "strives for architecture that daily embodies 'abstract expressionism', characterised by a healthy balance between intelligent restraint and controlled expression."

Founded by Luc Binst, the practice has almost 50 years of experience. Its multidisciplinary portfolio, with inspiringly diverse scales of projects, has been realised with an experiential approach. Between sharp edges and curved silhouettes, their building are characterised by visually light structures, which sometimes seem to be floating in the air. Inventive shapes, a great mix of materials, and a strong focus on openings are further signature features of BINST's elegant designs that create landmarks in the urban landscape. The studio, according to their statement, "strives for architecture that daily embodies 'abstract expressionism', characterised by a healthy balance between intelligent restraint and controlled expression."

Founded by Luc Binst, the practice has almost 50 years of experience. Its multidisciplinary portfolio, with inspiringly diverse scales of projects, has been realised with an experiential approach. Between sharp edges and curved silhouettes, their building are characterised by visually light structures, which sometimes seem to be floating in the air. Inventive shapes, a great mix of materials, and a strong focus on openings are further signature features of BINST's elegant designs that create landmarks in the urban landscape. The studio, according to their statement, "strives for architecture that daily embodies 'abstract expressionism', characterised by a healthy balance between intelligent restraint and controlled expression."



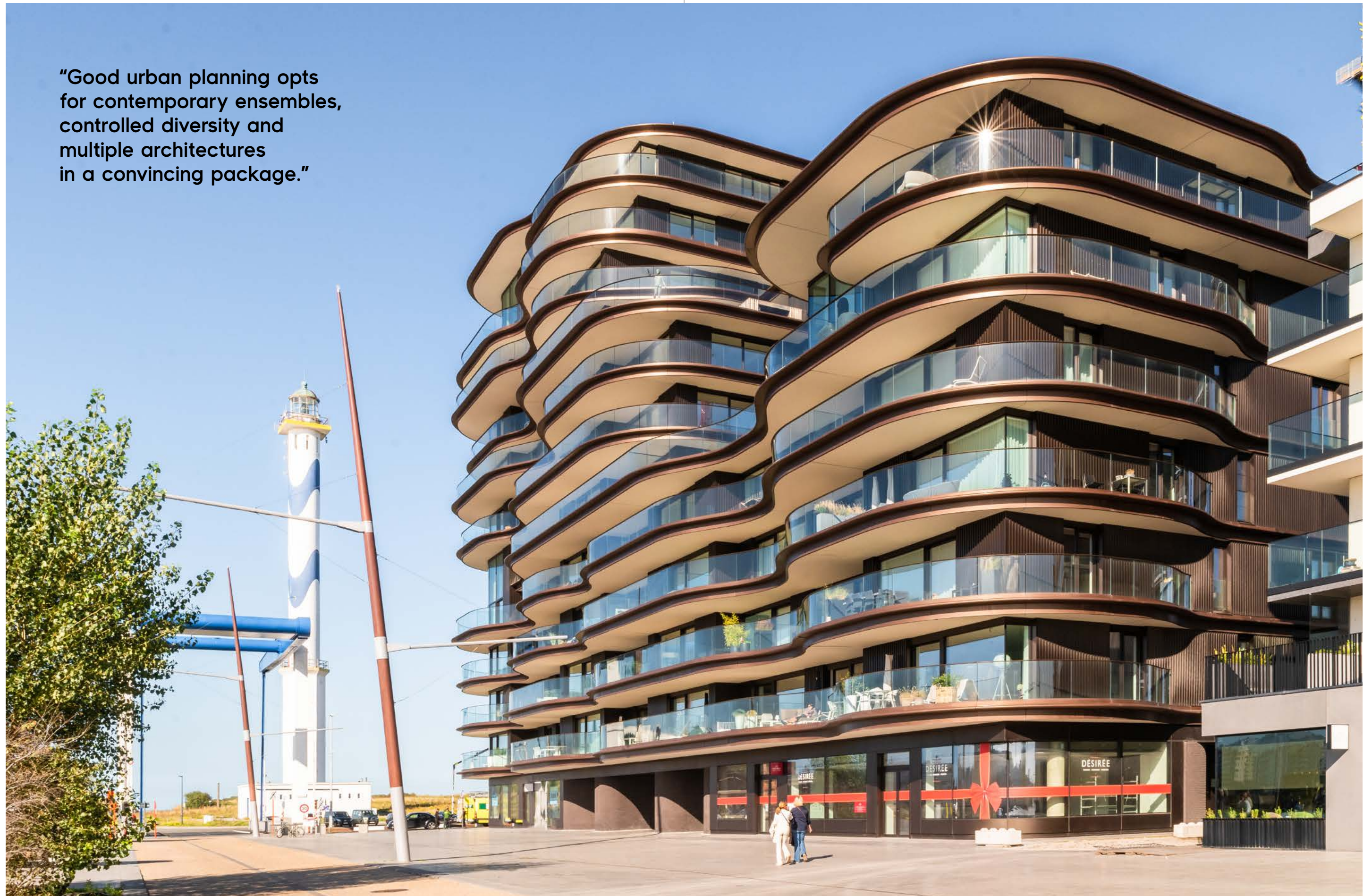
One Baelskaai, Ostend, Belgium, 2021

This distinctively shaped luxury apartment building also houses commercial spaces and a parking area. The dynamically undulating lines of the terraces have been inspired by the coastal context, while the continuous curved glass balustrades have been designed to reflect light, air, and water.

This distinctively shaped luxury apartment building also houses commercial spaces and a parking area. The dynamically undulating lines of the terraces have been inspired by the coastal context, while the continuous curved glass balustrades have been designed to reflect light, air, and water.

This distinctively shaped luxury apartment building also houses commercial spaces and a parking area. The dynamically undulating lines of the terraces have been inspired by the coastal context, while the continuous curved glass balustrades have been designed to reflect light, air, and water.

"Good urban planning opts for contemporary ensembles, controlled diversity and multiple architectures in a convincing package."



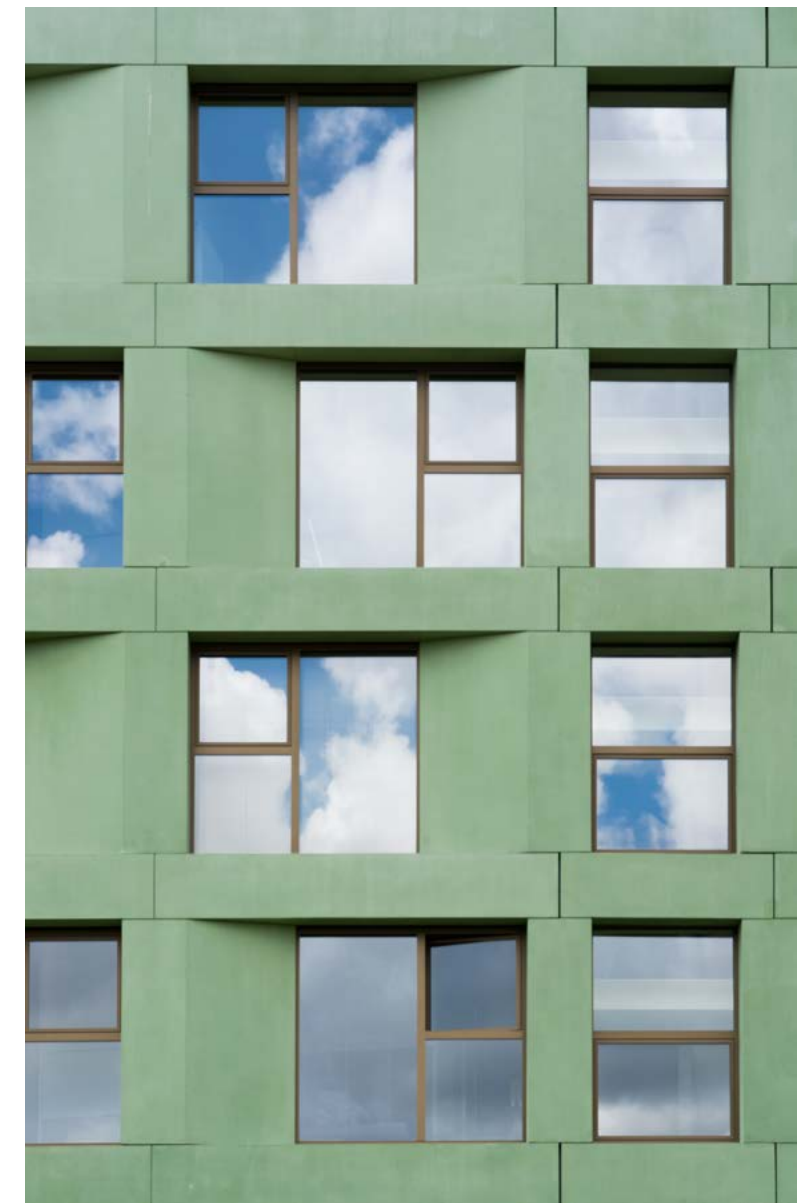


Woods, Kessel-Lo, Belgium, 2017

Over 150 student rooms, as well as underground parking and bicycle storage, have been shaped into a shard-like volume. The playfully carved façade is made of green acidified concrete, which is contrasted with bronze carpentry. Large floor-to-ceiling windows let in an ample amount of light.

Over 150 student rooms, as well as underground parking and bicycle storage, have been shaped into a shard-like volume. The playfully carved façade is made of green acidified concrete, which is contrasted with bronze carpentry. Large floor-to-ceiling windows let in an ample amount of light.

Over 150 student rooms, as well as underground parking and bicycle storage, have been shaped into a shard-like volume. The playfully carved façade is made of green acidified concrete, which is contrasted with bronze carpentry. Large floor-to-ceiling windows let in an ample amount of light.



Dok Tower, Antwerp, Belgium 2022

The sand-coloured apartment house topped with a green roof terrace is visually striking thanks to its original shape. Its open-work façade gives the 81m tower lightness and a sculptural look. The extended terraces are counterbalanced by built-in balconies, and together with numerous openings these act as inside-outside connectors.

The sand-coloured apartment house topped with a green roof terrace is visually striking thanks to its original shape. Its open-work façade gives the 81-metre tower lightness and a sculptural look. The extended terraces are counterbalanced by built-in balconies, and together with numerous openings these act as inside-outside connectors.

The sand-coloured apartment house topped with a green roof terrace is visually striking thanks to its original shape. Its open-work façade gives the 81-metre tower lightness and a sculptural look. The extended terraces are counterbalanced by built-in balconies, and together with numerous openings these act as inside-outside connectors. .

