



COVER

BW

02



EDITO

EDITO

After the introduction of our new office address, our new facilities and ambitions, B02 constitutes an important update to our design approach and great diversity of assignments, as a multi-disciplinary firm. Focussing on increasing individuality in small and large-scale projects, SPOTLIGHT presents about 20 projects under the headings 'Private living', 'Suburban living', 'Urban living' and 'Urban developments'. In the meantime we have launched 'B brand', a new design hub and 'B scene', a room for art, which are in full development; Architecture, art and design converge @ Luikstraat N°7.

L.B.

01

EDITO

05

BINST ARCHITECTS

06 Luikstraat N°7

08 In figures

10 Vocabulary

14 Virtual reality

16 Circular building

19

IN THE PICTURE Offices

25

SPOTLIGHT

26 Private living

42 Suburban living

56 Urban living

76 Urban development

93

IN THE PICTURE Molenveld

99

B BRAND

100 Projects

106 Shard

108 Low cross

110 Five

115

B SCENE

123

B 7

134

PR & INFO

140

COLOPHON



+

BINST ARCHITECTS

BINST ARCHITECTS

- + _____ Luikstraat N°7
- + _____ In figures
- + _____ Vocabulary
- + _____ Virtual reality
- + _____ Circular building

Luikstraat N°7

Binst Architects has been based at Zuid for six months now! A location in a cultural setting in full transition and redevelopment.

A new habitat for an architectural firm that wishes to unite with ambitious, like-minded and enterprising people in numerous ideas, initiatives and ambitions forming a single, complete whole. In recent years, much has changed in the construction industry in terms of regulation; we are on the eve of a technological revolution, new building methods, fundamental energy principles and over the next 10 years the construction industry will change in an intriguing manner! With a wink to the fantastic 1920s, I refer to the third decade as the 'Roaring Twenties'! We are very much looking forward to it and are therefore convinced that in the future, architects will need to broaden and strengthen their facilities at the organisational level.

The great opportunities we have had in recent years, our clients' many ambitions and dynamics have often been highly contagious and we wish to be a firm that can keep up and provide direction. Twenty years later, we are ready for a breath of fresh air, a renewed focus on the future and the dynamism for which the new, sleek label at this location strives. It has finally led us to translate this symbolically at our new address.

Ultimately, we will jointly build on quality, well-being and our urban future. Ultimately, we are all continuously encouraged to innovate, to strengthen and to share our interests in the best possible way. The core message is to work together, jointly take the initiative, stimulate each other and explore the building medium together in a challenging manner. This address symbolises how our approach to construction is evolving, how we currently intertwine our cross-over collaboration, dialogue, networking, ambition, different working methodology and architecture in 'a single suitable installation' and an accessible venue at the service of us all.

After all, architecture is increasingly in the spotlight and we are forced more and more to translate our medium and the integrated design process based on a macro approach in line with our clients' market-dynamic vision, and how living, working and relaxing are represented in an increasingly qualitative manner. This often produces interesting fields of tension with regard to the permissibility of projects, but we are very much in favour of all the urban services that have also supported us with 'healthy criticism' over the years.

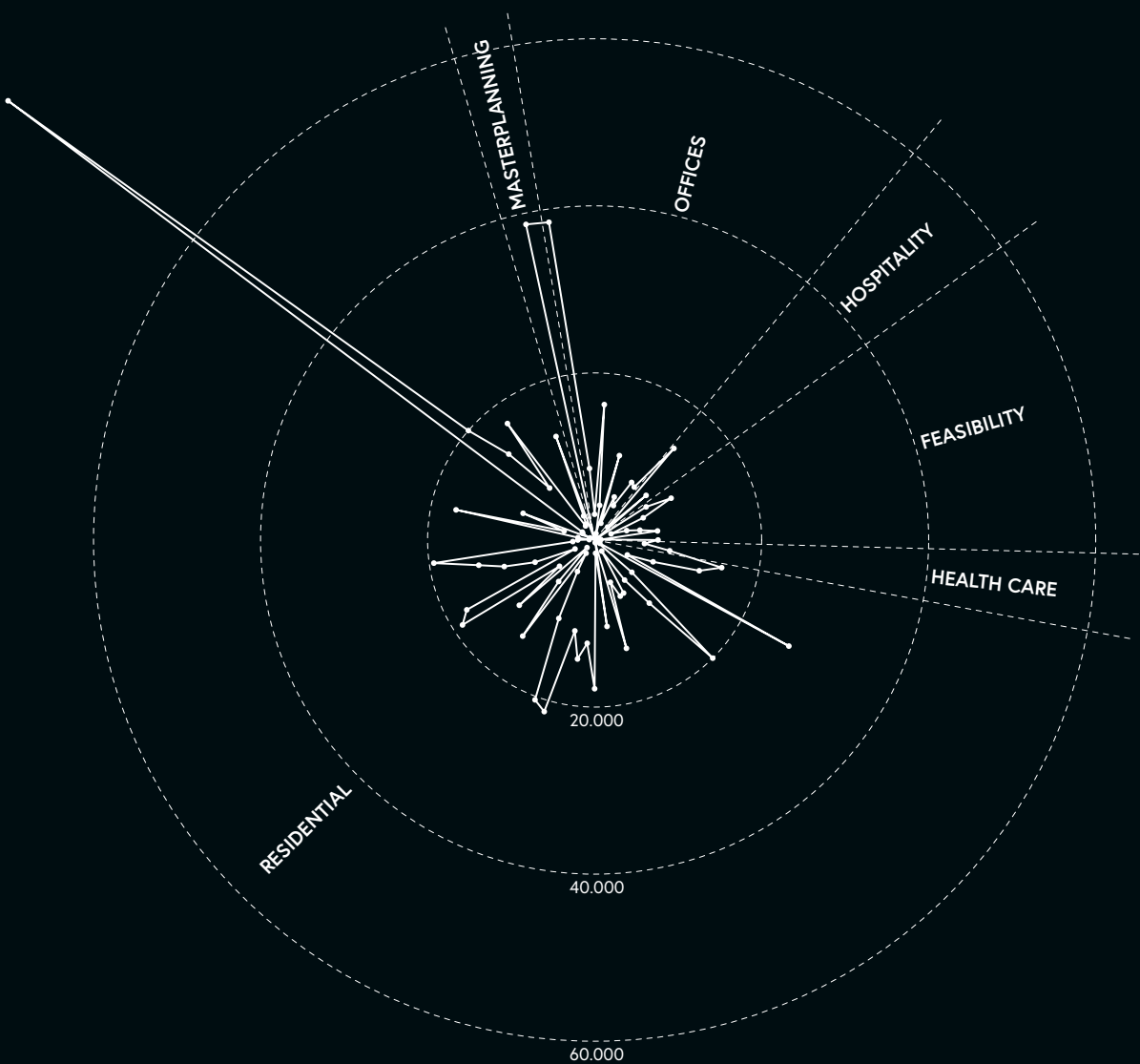
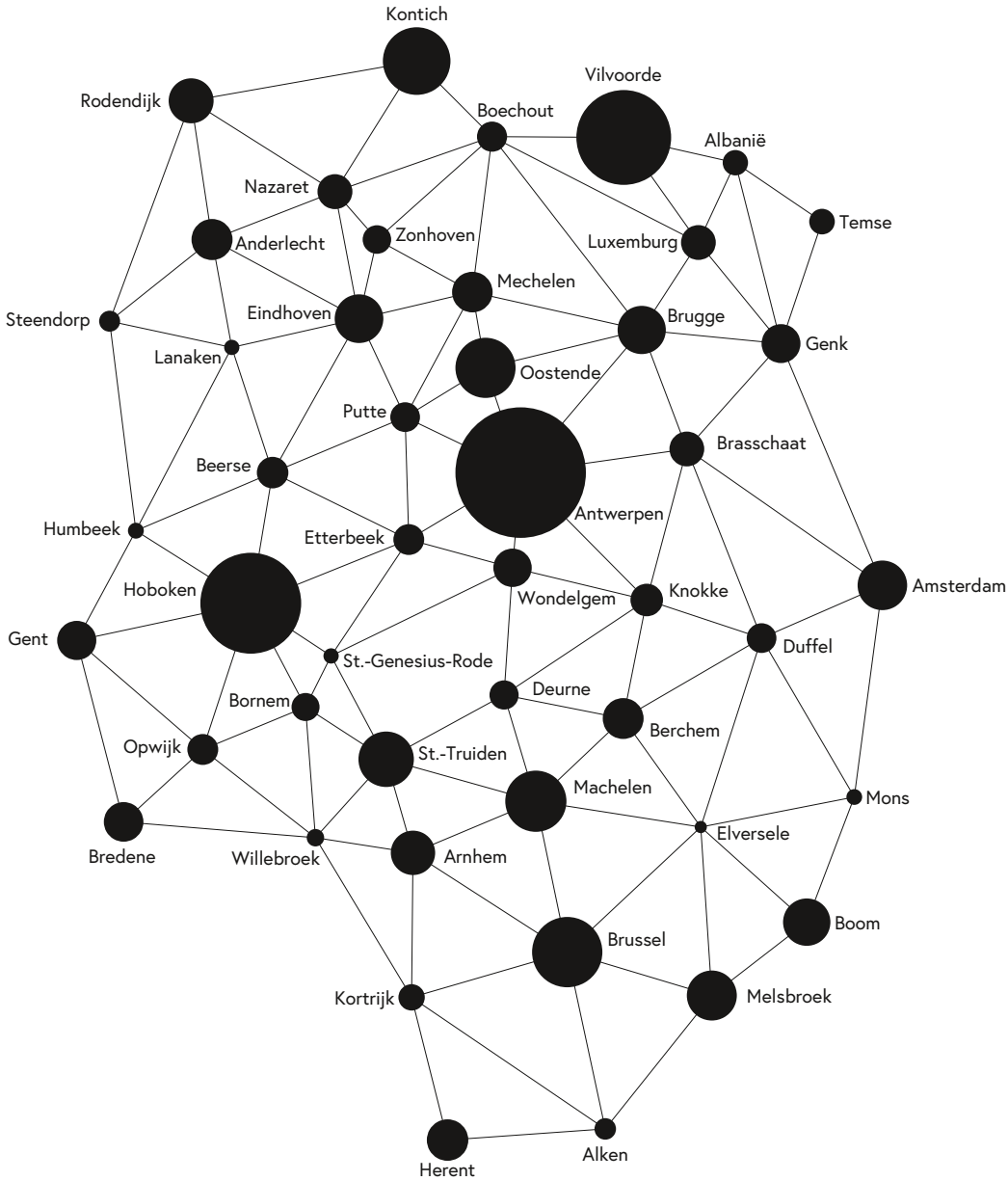
However, it often takes courage and daring to give this trust in urban, architectural or iconic suggestions as a lever even more of a chance. Ultimately, we are building on 'positive architecture'! On 'positive developments' in the theme of 'qualitative experience' and architecture as a form of 'quality time'. I am convinced that in the future it will make us, humans and users, much stronger mentally...

Luc Binst



In figures

Locations — current projects



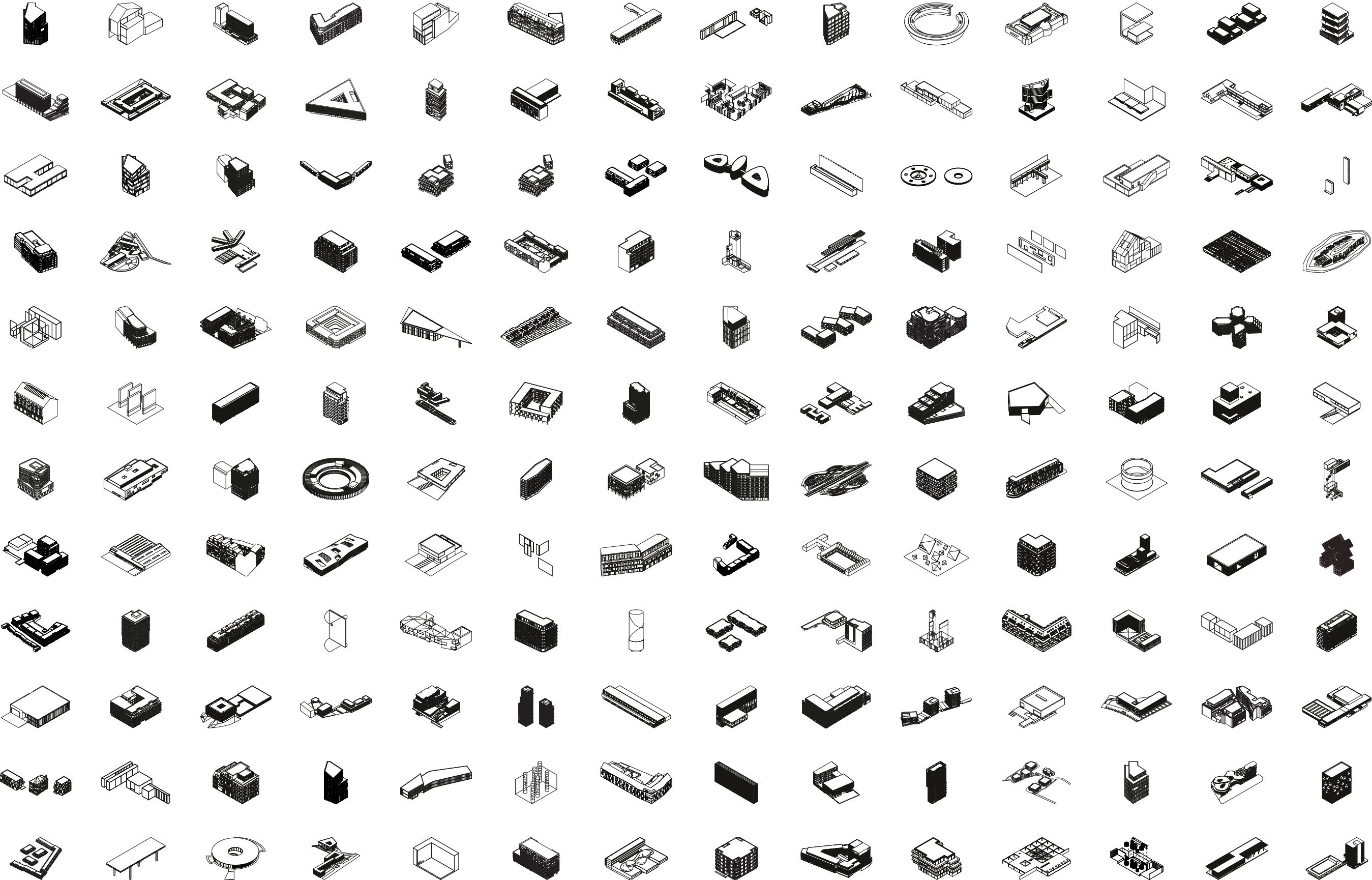
1,035,837 m² of total gross floor space — current projects

Vocabulary

+

Our diversity in architecture is boosted on a monthly basis by growing research into conceptual typologies. This vocabulary, this DNA of commissions can be translated into a new collection of abstract objects in metal print. Small, sculptural models such as furniture and buildings by BINST ARCHITECTS.





Virtual reality

The development of virtual reality is at the forefront of the technological revolution. While in the past, this concept was mainly associated with video games and sci-fi films, it is now emerging in more and more areas of society. This is also the case in architecture: virtual reality makes it possible for third parties to view designs in advance. While two-dimensional drawings or miniature models make it tricky to imitate a project's end result, virtual reality enables clients to see future buildings in a way with which they are familiar.

Our firm is fully engaged in introducing VR technology to our clients in a practical and reliable manner. Our customers are impressed by this total experience and new project approach. It is our mission to implement this technology as an integral part and control tool of our design process. Recently, with the help of VR, we established that the height of the auditorium in a design was overdimensioned. This makes VR an important additional measurement and evaluation method!

We are convinced that in five years' time the architecture sector will be organised in a completely different way. It's great that people can experience buildings realistically in advance and can even see the area around the project through virtual windows. Step by step, the level of detail will continue to increase and we will soon perform joint evaluations using a fully virtual building model, in which projects will first have to be approved in 3D before they can be built. This is definitely the future.

With our team of progressive architects, we hope to be one of the most dynamic and ambitious firms in this field. Using the intriguing virtual reality techniques, we can develop live project experiences, a 3D film around you in your own building medium. This approach will allow us to engage in a very active process with our clients, in which three-dimensional coordination becomes the number one priority. This is a valuable extra service that creates a special bond of trust. In addition to this important dialogue with the client, VR is also used for internal evaluation and is increasingly evolving as an indispensable design tool.

VR is already fully integrated in our practice. For a residential project, we showed our client that issues related to privacy and views inside the building from outside, were completely solved by our design. When presenting a master plan, we used VR to assess the volume of a new district development in relation to the scale of the surroundings. While evaluating the design of a hotel in Bredene, we went a step further and offered our client the opportunity to take a virtual look at our work throughout the design evaluation process.

Ultimately, virtual reality provides a methodical approach from A to Z. It ensures a more sustainable design process in which a stricter control protocol virtually rules out any mistakes. It is the technology of the future, and we are very curious about what else it will bring us.



Circular building

Completely in line with its vision for the future, Binst Architects recently joined the 'Green Deal Circular Buildings', an initiative of the Flemish government together with Circular Flanders, the Flemish Building Confederation (VCB) and OVAM.

Along with 230 other participating public and private organisations, we demonstrate our climate commitment and our focus on future-oriented building, not only in words, but also in actual deeds.

More than 60% of our CO₂ emissions are related to the materials we use. The circular economy offers solutions to reduce that impact. For the construction sector, this means the reuse and maximum high-quality recycling of building materials, a focus on change-oriented construction, optimum use of space and extending the life of buildings and their materials.

In order to create a circular economy in Flanders by 2050, in which cycles of raw materials are closed, we need other products, services and earning models. This can be achieved through close cooperation between companies, governments, knowledge institutes and citizens.

In dynamic building and renovation work, time is considered an important fourth dimension and design parameter of a building. The layout of a building must be adaptable to changing needs (design for adaptability) and with the aim of material reuse or high-quality recycling. Working with building materials that can be disassembled with easy recoverability and standard dimensions will become an important parameter in this respect. According to these basic principles, the building could be regarded as temporary storage for materials.

We predict that all of this will lead in the short term to a shift of responsibilities, valuations and tasks within the entire construction cycle. Disassembly capability, modularity and even take-back obligations will fundamentally impact our design and material choices more than ever. Adaptability and reusability are criteria that are becoming increasingly self-evident.

In the future, manufacturers, suppliers, designers and implementers who already fully endorse the importance of this ambition will possess the necessary experience to provide relevant solutions to these intriguing issues.

We are committed to this innovative learning network to share practical experiences with other construction companies, building material producers, local and regional authorities, private builders, researchers and other organisations.

In specific terms, this commitment also involves extensive knowledge acquisition, the execution of at least one pilot project and taking the necessary steps to structurally integrate circular building into our business operations and future projects.

With this in mind we look forward to objective criteria and a methodology that allows for a comparable weighting so that designs, building methods and materials can be compared. The creation of material passports for buildings is an important added value in this respect. Moreover, the potential link with our

further optimised BIM method is obvious, and very promising in this regard.

From now on, new and current projects will be screened internally for their compatibility with the circular principles. Further internal training and continuous awareness-raising is planned. The challenging future with circular tendering as the norm in which many more parameters are taken into account than just the most competitive price, already looks promising...

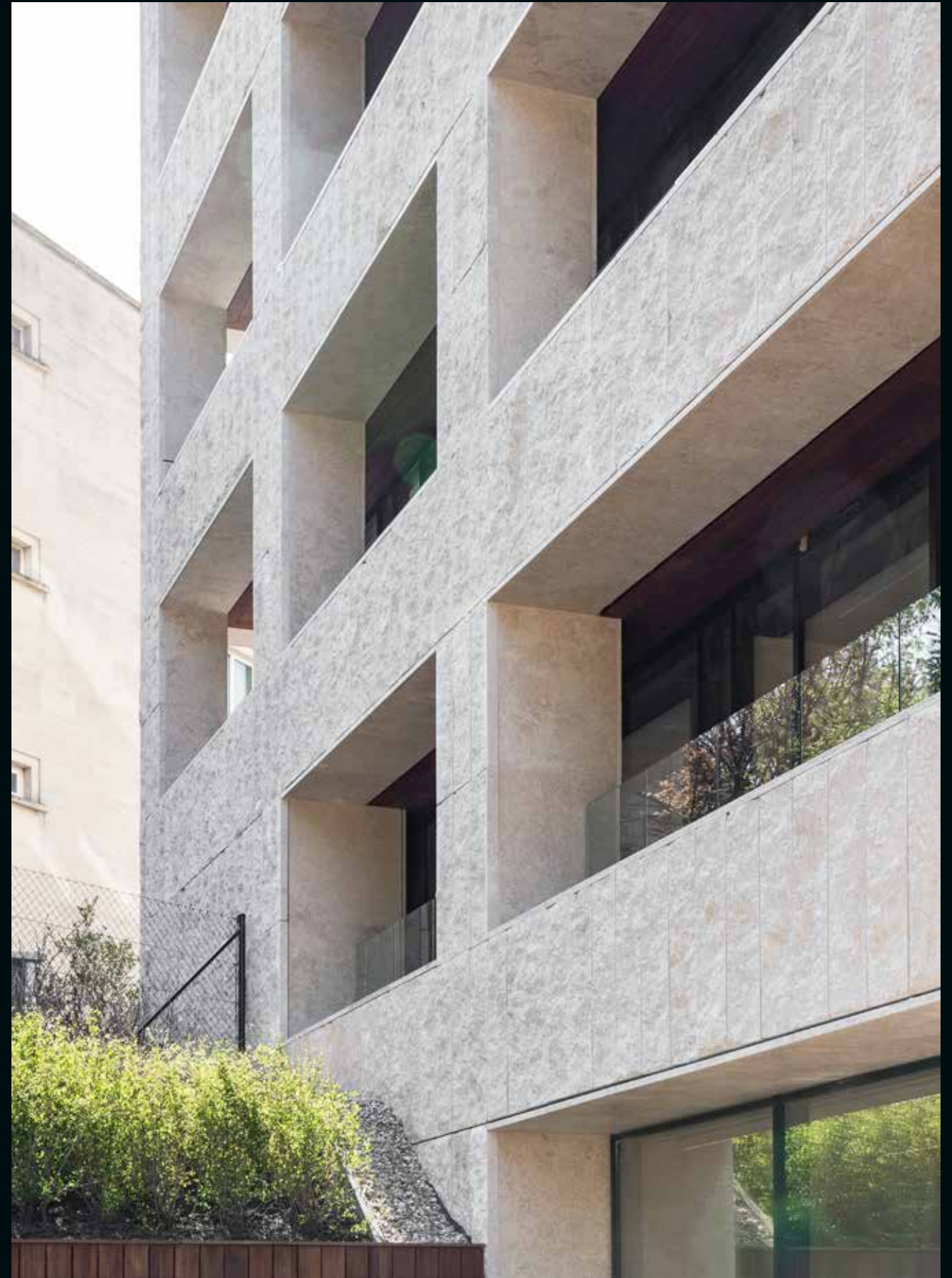


IN THE PICTURE

OFFICES

ETTERBEEK





+

SPOTLIGHT

SPOTLIGHT

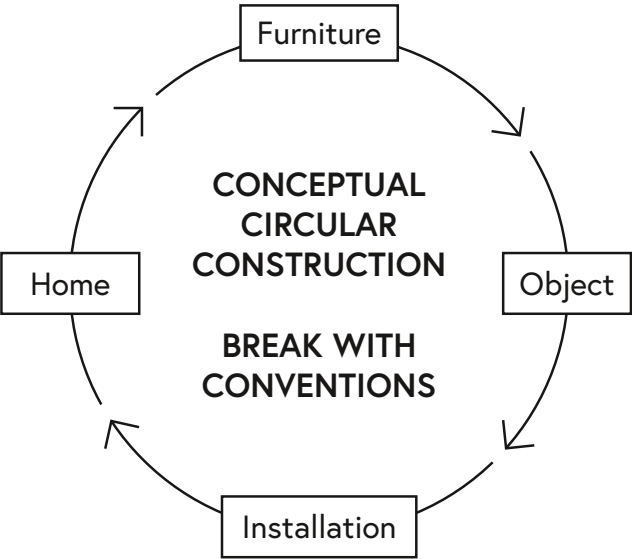
- + _____ Private living
- + _____ Suburban living
- + _____ Urban living
- + _____ Urban developments

Private living

Private living has no boundaries in terms of architectural, typological and programmatic exploration. They remain the most fascinating and complex assignments in an à la carte approach to housing. With the conceptual approach of a few very different assignments and locations each year, BINST ARCHITECTS continues to train in the private living of tomorrow and how day and night areas can be rearranged schematically.

With the fundamental breakthrough of housing traditions and conditioned living, we consider private living on a human scale as a 'maximum experiential scenario'. A scene in which functions, views and furniture in other dimensions related to size and composition are intertwined with the residents as users at the core. The occupant as the driver of the housing machine, which in its architecture is free from habits and presents the living biotope as an object, a pavilion or a unique element on the landscape. In B02 we will introduce five very different houses that have now been built or are already in the permit phase. All designed on the basis of sculptural research in volume setting as well as in terms of planning organisation and material experiment; from black-lacquered glazed facades, to chrome-plated exterior joinery or white-stained wood finishes on a skeleton structure in wood or steel, with a fast and dry construction time frame of just four to six months!

This continuous search for and research into innovative private housing supports our broad architecture vocabulary.



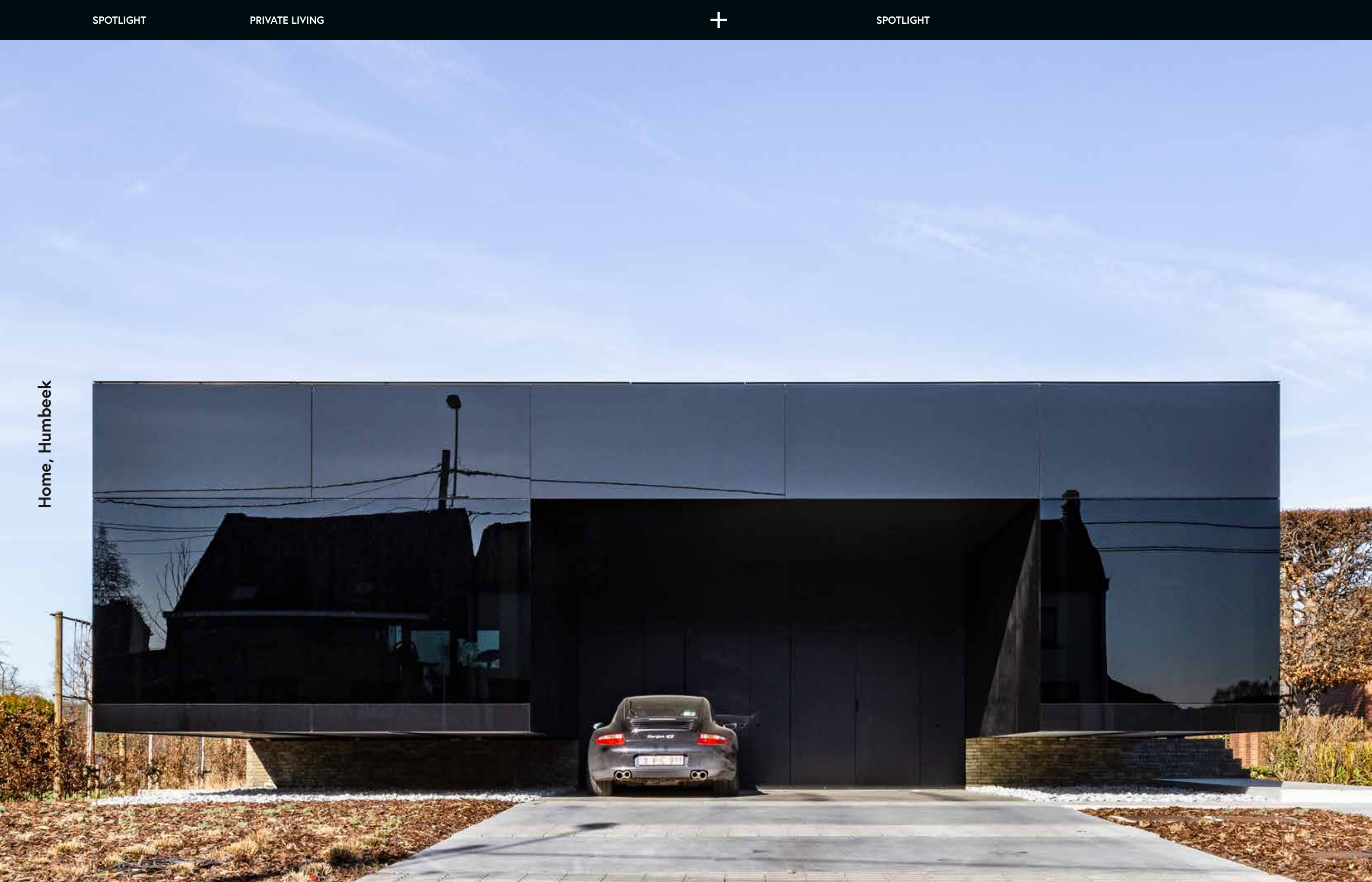
Circular concept image — schedule



Home, Humbeek



Home, Humbeek





Home, Beigem



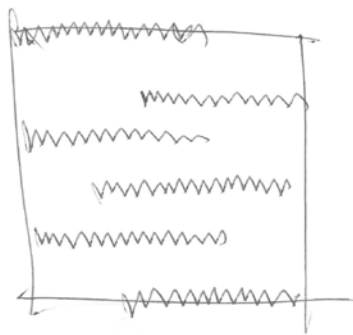


Home, Beigem

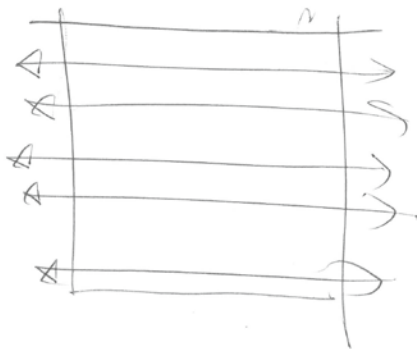




Home, Bornem



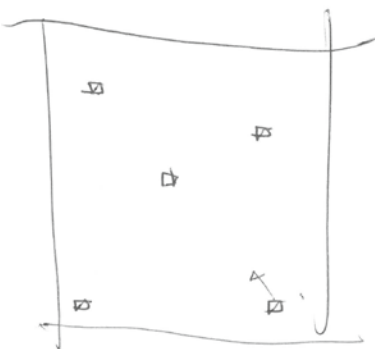
Curtains



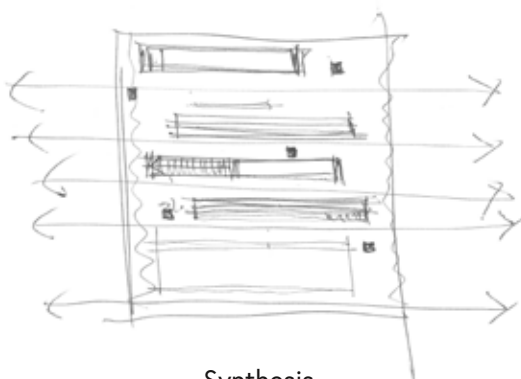
View



Sculptures



Structures



Synthesis





Anonymous



Anonymous

Suburban living

Suburban living is in full transition, to a current awareness of space consumption and where the concrete stop in Flanders makes our society aware of the revamped housing model with more compact and alternative housing principles.

A not particularly self-evident transition from Belgian living principles that will develop in steps and generations to produce a different map of villages and cities that redefine themselves. Architecture and urban planning then serve as the binding agent to model the fragmented idiosyncrasy of yesterday for optimal use of residual zones, with a major focus on delicate infill development areas and where concepts such as density, harmony, collective living and dialogue are central.

Suburban living faces a new challenge and a different future that, more than ever, weighs up the political courage against the support of the neighbourhood, which can at times be tricky! Belgians are facing a change in mentality as a historical momentum in our responsibility for the future. In suburban development considerable attention is devoted to the power of the collective, the collective quality of life, the landscape as a new social and recreational binding agent.

In this current selection of assignments, we distinguish between suburban living on the waterfront in Steendorp and the neighbourhoods in Bornem at the rear, the redevelopment of a former malt house in Putte, a new, small residential area in Humbeek and a large infill development in Zonhoven. The choice of materials often lies within the palette of a more accessible, receptive and light architecture.





Multi-family living, Zonhoven — Construction company Dethier





Bar'Lo, Bornem — Cornerstones





Bar'Lo, Bornem — Cornerstones





+ +

New suburban living
as a positive lever to
the context.



Residence Brickville Bay, Steendorp — J&C Spentek nv



Residence Brickville Bay, Steendorp — J&C Spentek nv



Urban living

Urban living increasingly absorbs the power and grateful message of architecture. And so our cities are transforming into more qualitative habitats that unite living, working and leisure to exert a powerful attraction for new city dwellers. The city as a renovated living room with a growing number of advantages in terms of mobility, cultural sites and a highly diverse range of current residential principles in the ever-expanding residential options. The city as a dynamic field of work for architects, with the city services to safeguard unity within the diversity of signatures. With the now familiar principles and concerns regarding urban harmony, the sustainable use of materials and careful detailing, our architecture within the city stands for the continuous exploration of our operational individuality. A sleek, rigid architecture, which, with its conceptual purity, is highly consistent and, where necessary, largely defines the cityscape.

With a selection of six projects in its own city, BINST ARCHITECTS demonstrates current research into various grid architectures in polished anthracite-coloured composite concrete, rust-coloured concrete façades, special brick piers or an industrial interpretation in steel cladding. From high-end luxury architecture to healthy, moderate urban architecture. With three designs to be built on the quays of the Scheldt and three inner-city transformations of former factory sites, our share of reconversion and innovative designs of striking building sites in search of timeless stature, is growing.



Residence Antigoon, Antwerp — Vlaamse Poort & Bermaso



Residence Antigoon, Antwerp, Antwerp — Vlaamse Poort & Bermaso





Residence Antigoon, Antwerp — Vlaamse Poort & Bermaso







Residence Kronenburg, Antwerp — Lacavi





+ +

Urban living increasingly
absorbs the power of
architecture.



Elzenhof, Antwerp — Vlaamse Poort & BLI





Reconversion project Belpairestraat, Berchem — DCA & Kolmont



Reconversion project Belpairestraat, Berchem — DCA & Kolmont



Stacked living concept Orteliuskaai, Antwerp — Jcal Vastgoed



Urban developments

Today urban developments face the challenge of the (large) leap of scale to an increased density that markedly transforms a city in a decade! In addition to Antwerp and Brussels, all the provincial capitals are seeking the right urban development activities and the integration of new urban zones and opportunities on the edge of the city, in station areas or at former industrial zones.

But many smaller municipalities such as Geel, Lier, Sint-Truiden, Mol, Zonhoven, Grimbergen, etc. are also represented in our portfolio of research work on urban densification. It includes an effective master plan for unity in diversity and a balance of volume and colour. The breaking up of the classic, closed building block also offers greater perspective than the literal aeration of traditional principles.

Both in the enhanced experience of collective intermediate zones, as well as in the overall design of an interactive and dynamic residential area with fascinating intersections, views and architecture as a major starting point. Tomorrow's urban development shows the city of the future as an extremely high quality habitat with all its social facets and recreational possibilities, and the diversity of architecture at the forefront.

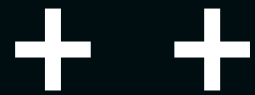
With an à la carte urban development approach, these city developments either adhere to the major themes of the former spatial implementation plans (RUPs) or we ourselves are their author; 'De Molens in Vilvoorde' (Matexi), the 'Grysonsite in Anderlecht' (CityDev), the 'Kometsite in Mechelen' (Revive) etc. have already been granted, put out to tender or the construction site is up and running!





Komet, Mechelen — Revive





A good master plan
seeks unity in diversity.
Breaking up the closed
building block offers
greater perspective.





Komet, Mechelen — Revive





De Molens, Vilvoorde — Matexi



De Molens, Vilvoorde — Matexi





De Molens, Vilvoorde — Matexi





Grysonsite, Anderlecht — CityDev

+

IN THE PICTURE

MOLENVELD

HERENT







B BRAND

B BRAND

"B brand is a collective of four professional designers united by a passion for interior and design as an art form to produce total concepts with a strong identity."

By making an organisational statement, B brand approaches residential and work programmes, products and objects in a surprising, unconventional way. The answer lies in a surprising atmosphere, a zone where design and art meet 'on stage' in an aesthetic and functional manner. Through this continuous interaction, the individual becomes, as it were, a spectator of his own environment. B brand transforms sculptural grids into a conceptual design. The pure detailing of these designs undoubtedly comes into its own through the pursuit of high-quality technical, functional and aesthetic end products. B brand is committed to honest (superior) materials, craftsmanship and circular design. In this way, B brand offers solutions to the sustainability issues of our era: investing in craftsmanship, the product and the end user in every aspect.

At B brand, people are aware of the in-house talent and every opportunity is taken to highlight it. Everyone is fully versed in entrepreneurship, possesses experience and references that produce a kind of self-awareness. Working together results in cross-pollination that is challenging and inspiring. The outcome of this cocktail is inherently expressed in strong and unique concepts.

PROJECTS



1.



3.

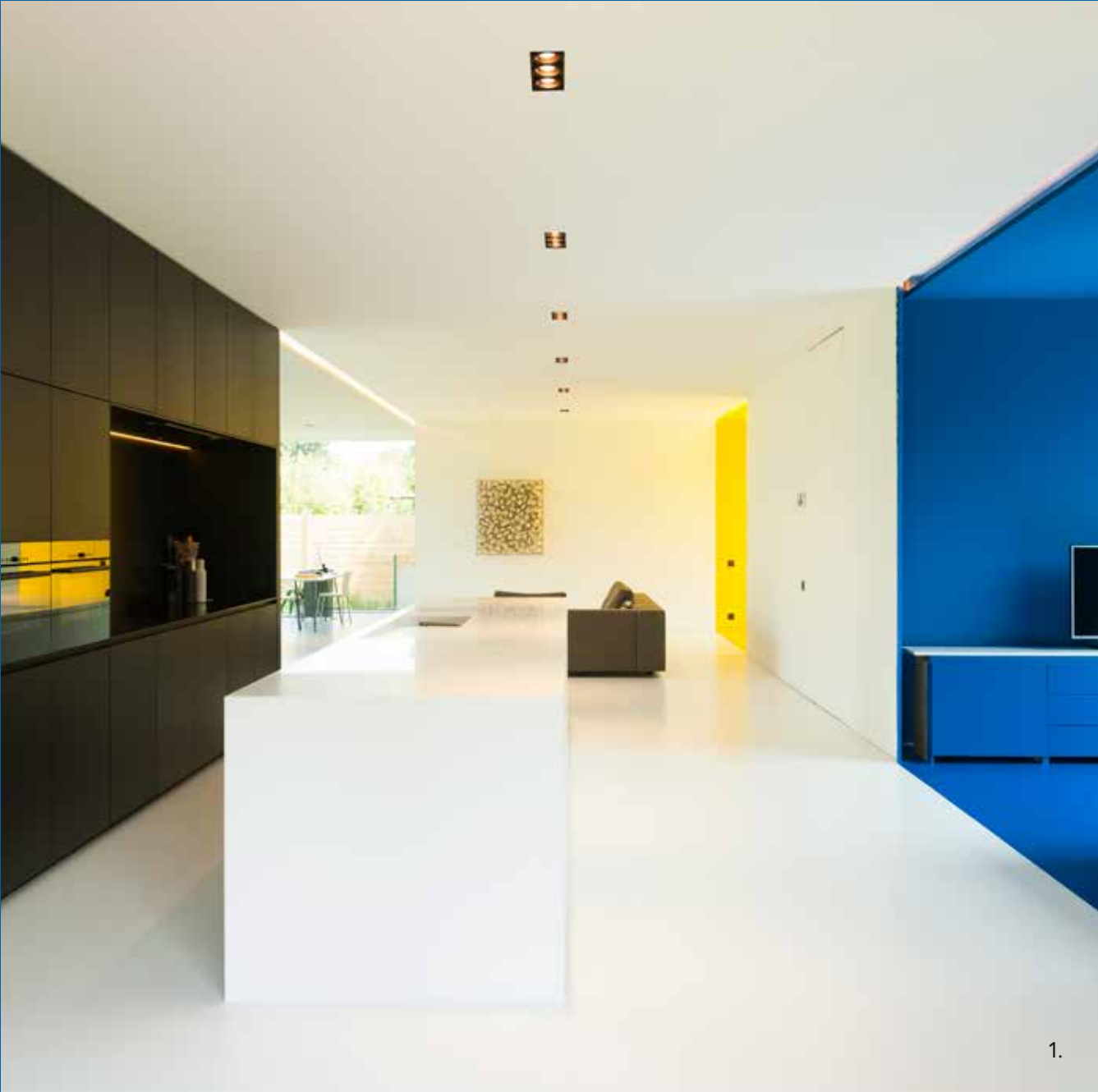


2.

1. Re-use residence VH, Kruibeke
2. Total design residence DVL, Nieuwpoort
3. Re-use brewery De Klok, Zottegem
4. Total design residence B, Temse



4.



- 1. Total furnishing new home BJ, Kapelle-op-den-bos
- 2. Total furnishing new home MG, Beigem
- 3. Total furnishing new home MB, Bertem



- 1. Renovation commercial space AV, Antwerpen
- 2. Total design restaurant Te Kook, Antwerpen

1.



2.



1.



2.



3.

- 1. Total design information pavilion Umicore + Zilvermuseum, Antwerpen
- 2. Total furnishing showroom Heylen Ceramics, Antwerpen
- 3. Total design information pavilion Diamant, Antwerpen

SHARD

SHARD is an iconic footstool that sits on the floor like a shard and with its various shapes forms a unique collection.

An idiosyncratic object in black, white or rusty colour, which also lends itself as a side table or as an object that defines the space.

We are launching SHARD as the first piece of seating furniture inspired by the result of our extravagant terrazzo floor executed according to the rules of the art and, which can be translated into a design pouf that is available in ten different shards and three colours.

"Be seated at your own private SHARD".
For prices and orders mail to info@bbrand.be





CROSS 2.0

CROSS 2.0 is the name of a low coffee table based on the CROSS 1.0 table. The table is available in two different shapes - a square or a rectangle - as well as in different dimensions. The tables can be perfectly combined to create different compositions.

The solid wood tablet is supported by three or five wooden cross columns that explore the boundaries of perfect design.

From coffee table to Zen bench, to a room-enhancing sculpture. CROSS 2.0 is a beautiful table characterised by superior craftsmanship in collaboration with Casimir Ateliers.

'CROSSover your coffee', 'CROSSover your table', 'CROSSover your living spaces'.
For prices and orders mail to info@bbrand.be



FIVE

'Five', the unique five-legged table concept with movable legs, was exhibited by Lensvelt at the Milan furniture fair, Salone del Mobile.Milano, in Ventura Central at the beginning of April.

With its odd number of legs, this atypical table necessitates an odd number of chairs. 'Five' can serve as an inviting guest table or as a sleek desk.

Be our guest at table FIVE.

For prices and orders e-mail info@bbrand.be



PRODUCT DESIGN — Five table







+

B SCENE

B SCENE

B scene in the context of an architects firm could be the ideal platform for reflecting on the quality (of life) of architecture within urbanism, and the problems of environmental boredom that lead to alienation and reduced social cohesion. Art can serve as a factor that makes a person look and think differently; it can be an 'accent' that improves life in the everyday, grey reality.

B scene could be a catalyst to bring people together on different levels to explore how artists could contribute to our quality of life. Artists therefore not only exhibit their work; they also engage in dialogue with urban planners, architects, urbanists and... politicians who often have the first and last word. B scene could play a connecting, advisory role within the activities of Binst Architects. I believe this could mean a new 'entry' in 'the mission' of an architectural firm as a catalyst between different partners and interests in improving the environment. B scene could generate business in larger projects in an innovative way, in combination with and based on presentations in B scene as a 'be seen' for another 'being' of art, namely 'public' within the architectural organisation of living, working, learning and relaxing.

I think that a separate and unique role could be organised here within/ alongside Binst Architects, who adopt an open-minded approach to the future in the context of assignments that must be 'seen' to incorporate the necessary developments in the field of ecology, health and the quest for a broader well-being. This is the new trend in social views of the world with its finite natural resources. The practical exercise is the 'subject' of mutual debates and an exchange of thoughts. Wouldn't it be wonderful if, in architecture, the voice of the artist was inherently afforded a 'voice', literally and figuratively, a voice that is taken into account in architecture and the environment, offering added value that cannot always be estimated in figures, as opposed to the idea of instrumental reason?

The advantage here, which should not be underestimated, is that no external, let alone existing, organisations need to be 'hired' to provide advice - I am thinking of the 'art integration' unit or of 'The new commissioners'.

Luk Lambrecht

Günther Förg — Bouquet

PREVIOUS 25.10.18—13.01.19



Luc Deleu & T.O.P. Office — *Transportable*

NOW 21.03.19—09.06.19

1

The presentation of Luc Deleu & T.O.P. Office's work in the context of space for art B scene is like a symbiosis of circumstances and necessity. Architect Luc Binst studied with Luc Deleu; in 2010 he published a book and in 2011 he presented an exhibition in Cc Strombeek, where Deleu's creation of a large X-constellation with containers marked Antwerp's conspicuous presence as an international seaport on the bank of the river Scheldt.

Antwerp is Deleu's home town and for decades Deleu has accused architecture of a narrow-minded view that lacks a broad perspective on 'building' in a world in which building plots become scarcer and scarcer.

In the world of art Deleu is known mainly for his powerful interventions with containers. Containers as units—as anonymous and standard blocks with which global trade across the sea, by train and on (busy) roads is organized in a way that makes the merchandise invisible. Deleu has as it were stripped the container of its anonymity and as an artist he has used in at times particularly spectacular compositions. His triumphal arches made of three containers are famous—though he invariably leaves aside what purpose these triumphal arches serve or for whom he built them. Sometimes his containers were tossed on top of each other or in a jumble in an abandoned warehouse, as if they were part of a simple and disarming children's game.

Showing and demonstrating scale was one of the things he paid special attention to as he piled up containers or put down large lampposts or electricity poles in a horizontal position in a private

or public space and exhibited them as readymades.

Deleu is an architect, but he lets his 'urbanistic' ideas loose in the free world of art, a world spared of rules. Daring to think big—the result of having been aware for several decades of the finite potential of the earth—is Deleu's particular preoccupation, which constitutes the leitmotif in the frankly superb oeuvre. His work is like a unique huge mirror he holds up to the political and other authorities that are responsible for the preservation of the Earth.

The exhibition in B scene features works from between 1972 and the present. It's an exhibition that in a down-to-earth manner makes clear how Luc Deleu & T.O.P. Office have been working for decades in a conceptual manner on 'another' organization of the world with regard to housing an ever-growing number of people in this world, people who some way or another (and en masse) want feed themselves and move around.

The exhibition starts with the authentic work *Mobile Medium University* (1972), which Deleu proposed hors concours to the University of Antwerp. The awareness that building plots are scarce and the fact that two thirds of the planet is covered with water inspired Deleu to house the university on aircraft carriers. These vessels of course also make it possible to fly away ultra-fast, and in Deleu's view the presence of the most modern communication equipment 'foreshadowed distance learning'.

The opportunity to show this very powerful older work next to the river Scheldt (which has disappeared from sight) in the transparent corner space of B scene is more than a progressive coin-



vidence: it also shows that Deleu's ideas are still valid and stand up to scrutiny, more than ever for that matter—not only as proposal, but also in their quality as poetry and therefore as art. As an allusion to MMU, the work *Urban Space – Academic Westbound Tour* (2016) constitutes a practical adaptation of a sea trip in the shape of a map on which the route is visually presented.

For a long time now, Deleu has had his place in the gallery of unrivalled artists, which also includes for example Panamarenko; there are few of these artists who create an oeuvre that will remain and that will continue to be meaningful for individual people and our society. The art of Luc Deleu & T.O.P. Office has its origin in a grandiose project, in a notorious voice that refers to the world, a voice that is and will remain topical.

The exhibition in B scene explores the more recent ideas that developed after the period in which Deleu focussed on the container in his artistic practice, as now according to the artist the container has been replaced by more urgent and topical architectural elements, such as the wall and barricades.

2

Art and the world, that means that as artist Luc Deleu dares to reposition himself and leave behind certain avenues—such as the familiar, successful and recognizable use of containers—to relate in a novel way to the global world in which nowadays 'everything' is possible and surprises become reality.

The series *Barricade* is an outstanding example of this turnabout. In 2016 Deleu created his first barricade on the Atlantic Wall in Raversyde (Ostend) as a positive, chaotic and planless constellation with directly available materials, which like a dam or trench protects against aggression, by the state or by other agents. The barricade has something of a 'manifesto': it stops something or it stands up for something. Deleu himself refers to Eugène Delacroix' iconic painting *Liberty leading the people* (1830), which is said to be the first depiction of a barricade in art. As an architect/artist, Deleu appropriates this 'motif' as a form of primary architecture, as a sort of symbolic wall for physical protection. The barricade is a sign of hope, (often) not built, but thrown together with scrap material, street furniture and 'found' stones, piled up as a solid obstacle. The work/scale model *BARRICADE#1(Raversyde)* from 2016 is the first example of this.

A wall is an obstacle. It stops all forms of mobility. There are lots of political or ideological walls in this world. On the winemaking domain of Casetello di Ama, the artist Carlos Garaicoa has even created a permanent work about them in the shape of an index/miniature park of walls.

Last year there was universal amazement when images were shared all around the world of US president Donald Trump who was considering what wall to choose from an array of models of huge freestanding

pieces of walls (9 m x 9 m) for the wall he would like to construct at the Mexican border, with the aim to prevent illegal and other forms of immigration. On television it all looked very 'artistic', a bit like *The Sculpture Show* that was once organized in the South District of Antwerp.

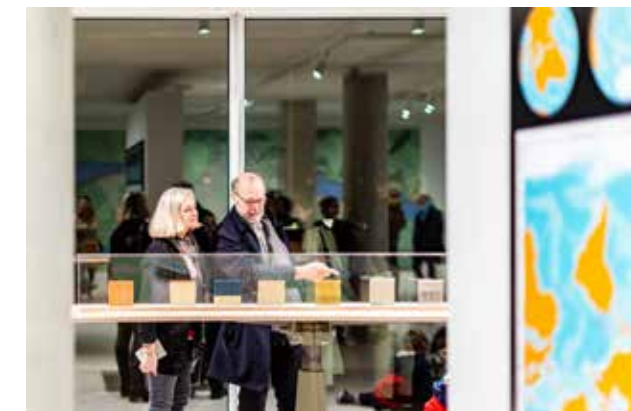
Deleu turned this in a huge scale model, in which the wickedness of Trump's intentions was turned into a work of art that called forth so many associations! Deleu selected one of the eight walls to be actually built in the South District or on the Scheldt embankment.

For the time being, the wall won't be built, but the concept is on view at the exhibition! The wall as the negation of freedom, the wall as the negation of transport and mobility, the wall as a sign of powerlessness and protection of 'our own people' and its knowledge and capital, the wall as border, the wall as a sign 'this is where it stops'.

It's easy to jump from here to the maps *Zwischenland* (2018) and *Tierra Grande* (2018). Deleu reflected on the creation of safe havens for the many unlucky refugees. He therefore came up with the idea to reserve a 10 km wide zone on both sides of all European borders for them. A similar proposal to reserve a 10 mile wide zone on both sides of the border between Mexico and the US is anchored in the same fundamental approach to this problem, which in fact also involves an issue of 'space'. Save havens, neatly distributed over and integrated in Fortress Europe; the same idea on the nervous border between the US and Mexico.

After the prefiguration of the *Landforms*, we approach the work *Darling Springs* (2016-2019), which is on view for the first time. The work is based on research in one of our most pressing contemporary problems: mobility. In a tremendously layered graphic language that fires the imagination, Luc Deleu & T.O.P. Office present an equally layered and sophisticated image of the potential of mobility in this monumental print that is glued on the wall. The schematic, multilayered drawing is like a heaving jumble 'in and between' which after some time humans as it were lose their way and start to see its beauty and poetry.

In a relatively small space, the exhibition *transportable* in B scene brings together the fascinating world of Luc Deleu & T.O.P. Office like in a spider's web, of which all the threads meet in a huge (indivisible) oeuvre, in which a profound humane preoccupation with the ins and outs of the world are and remain the subject.



**NEXT ON
VIEW**

Patrick Vanden Eynde
— 21.06 - 25.08.2019

+

B 7

B 7 VENUE

BINST ARCHITECTS throws its weight behind B 7, a concept in which we are happy to make our facilities in Zuid available to nurture and fine-tune innovative ways of thinking that connect us, and make them tangible.

Specifically in four formats that can be personalised to reflect the needs of your company in consultation with our organisational team: Black, Oxide, Gold & Body Architect.

Black, discreet meetings on the ground floor in a private space. Oxide, your outdoor networking event in a vibrant environment. Gold, your indoor private event in an architectural setting. Body Architect, healthy lifestyle support including exercise sessions.

**BLACK
OXIDE**

**Meetings
Networking**

GOLD

**B2B events
Team building
Bodyarchitect**

+0 Black & Oxide

BLACK

Meet in total discretion in a private space.

On the ground floor there are four meeting rooms, respectively Room L (Left), Room M (Middle), Room R (Right) and Room B (Binst). The rooms are designed as lockable boxes, whose ambiance can be personalised at will using a touchscreen.

In Rooms L and R you can use your laptop to give presentations on an 86" screen via the ClickShare system, with a maximum capacity of 12 people per room.

Room M is suitable for short meetings with four people or to rent as an inspiring workplace for the day.

Room B is the meeting room of CEO Luc Binst, which is made available for corporate dinners with a maximum of 12 people. The room also has direct access to the outside terrace.

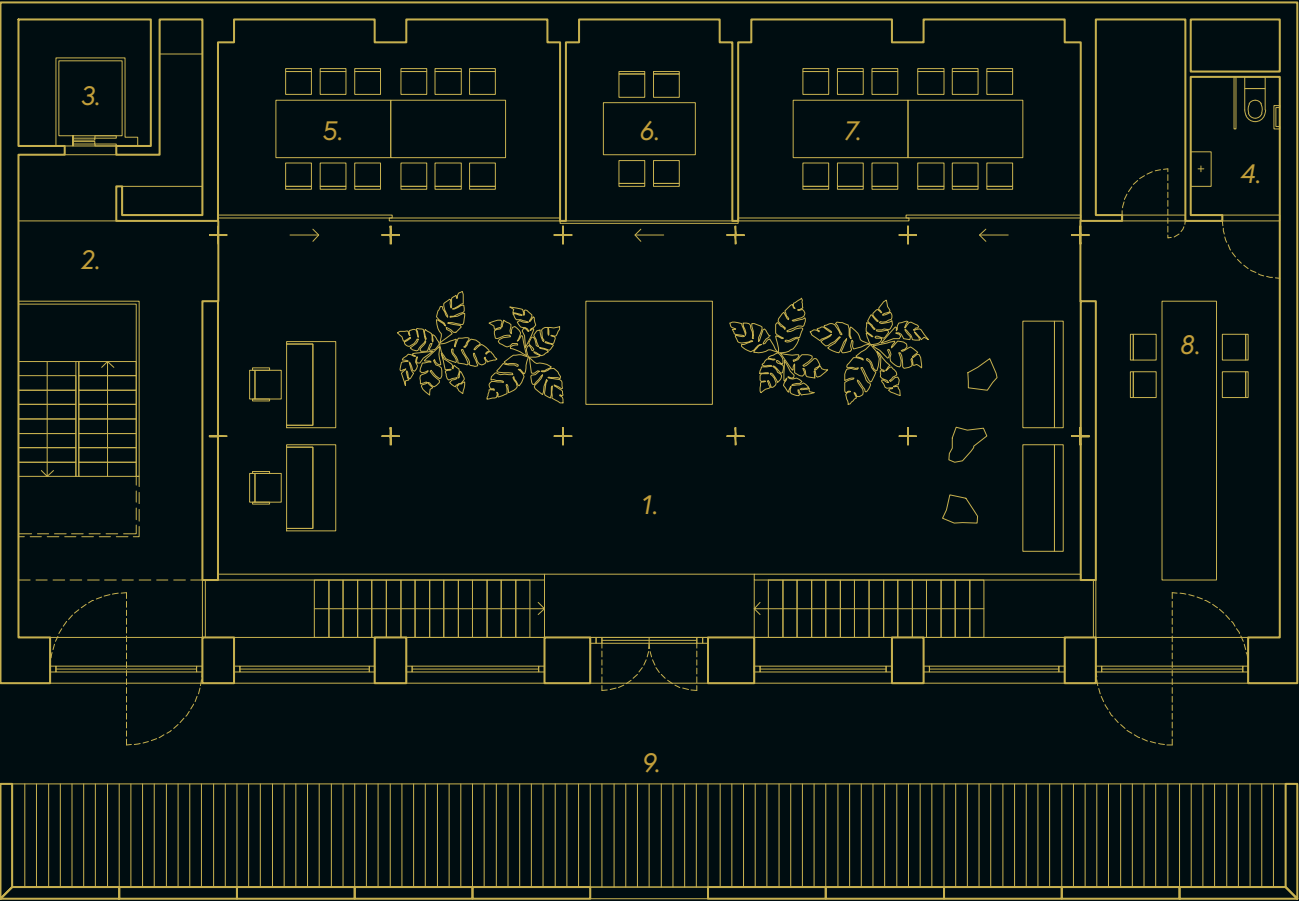
Room L, Room M and Room R can be reserved in the morning, afternoon and late afternoon, at least 5 working days in advance. Room B can be reserved during the day or in the evening, at least 10 weekdays in advance. Coffee, tea and water are included in the price. Other drinks are available on request. Tailor-made catering can be provided for all meetings. Ask about our possibilities for lunch meetings and corporate dinners.

OXIDE

Organise your event on an outdoor terrace in a vibrant setting.

We are happy to make our catering terrace available to organise outdoor events. The terrace can be used on its own or in combination with our meeting rooms (as a BOH, for example, for catering, product placement or cloakroom...) or basement. Depending on your event, the terrace is equipped with bar tables, modular furniture, parasols, gas burners, or your own proposed design.

To welcome your guests, you can also opt for a personalised entrance hall as part of this format. Ask about our options for light effects and video projections. Catering can be tailor-made and the options include a food truck. The location is available to rent for events in the evening or at the weekend. Providing you respect the peace and quiet of our neighbours, anything is possible.



FACILITIES

- 1. Entrance hall
- 2. Back Of the House
- 3. Elevator
- 4. Sanitary wheelchair accessible

BLACK

- 5. Zaal L
- 6. Zaal M
- 7. Zaal R
- 8. Zaal B

OXIDE

- 9. Buitenterras



Overview of rooms on the ground floor — B 7

Organise your event in an architectural setting.

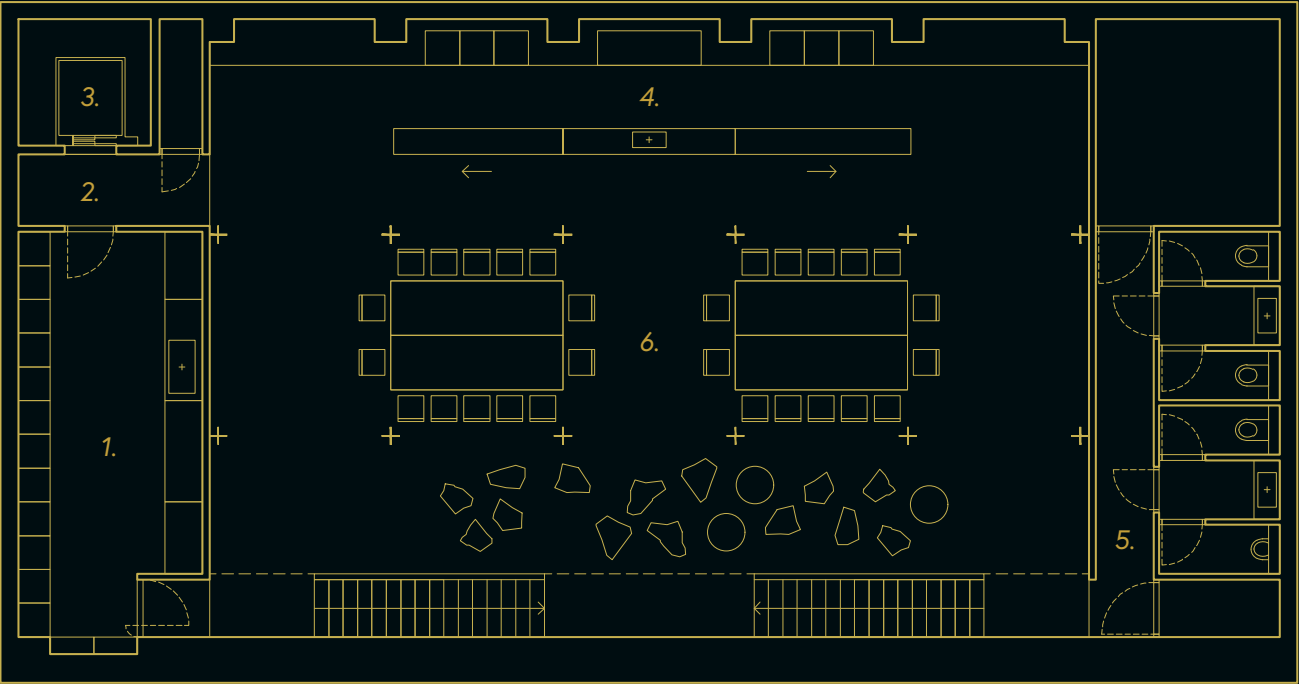
Situated between the quays of the Scheldt and the Gedempte Zuiderdokken, surrounded by the MuHKA, FoMu and Museum of Fine Arts, our multifunctional event space in the former 19th-century harbour area comes to life. Following intensive renovation work, the warehouse, which was used in the past for storing rubber from DR Congo, has been transformed into a contemporary office environment with state-of-the-art facilities. A stimulating combination of solid brick architecture and meticulous steel constructions combined with tactile finishing materials form the backdrop of your event. A vibrant environment in which you can organise meetings, workshops, lectures, receptions, training courses, presentations or exhibitions both during the day and in the evening, on weekdays and weekends.

The basement, which benefits from natural daylight along the façade is entirely at your disposal. The expressive palette of materials featuring white and black terrazzo and brass and mirror stainless steel arouses the senses and encourages positive encounters.

Three building volumes covered in mirror stainless steel and a cupboard wall finished in high quality brass house the concealed kitchen, which serves as the backbone of your event. An optimised BOH (Back Of House) is available for the practical organisation, which is connected to the ground floor by a lift.

Tailor-made catering can be provided for any event. Possibilities range from receptions with finger food at bar tables to an elaborate dining experience in the form of a business lunch. Performance capability techniques have been invisibly integrated into the solid finish. Projection facilities are provided on both sides of the room; you can give presentations via the ClickShare system using your laptop. The light, sound and curtains in the room can be programmed according to your preferences using the touchscreen.

To welcome your guests, you could opt for a personalised entrance hall bathed in spherical light. On request, a video projection or animation can be designed to add a touch of sophistication to your event.



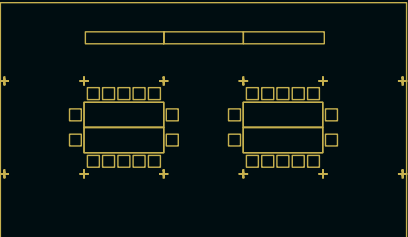
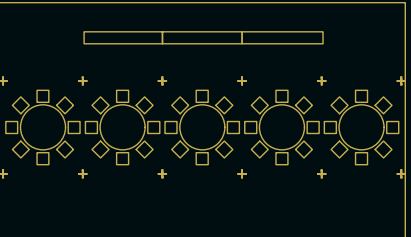
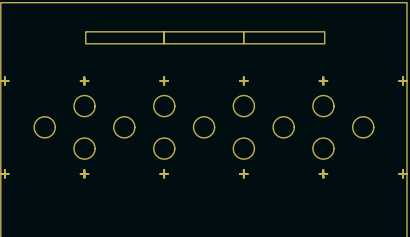
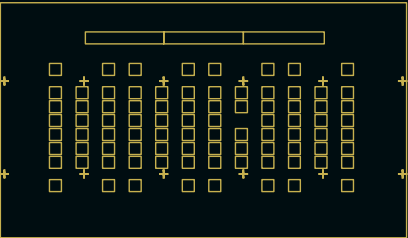
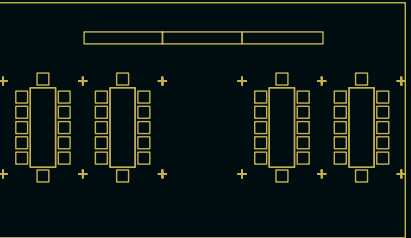
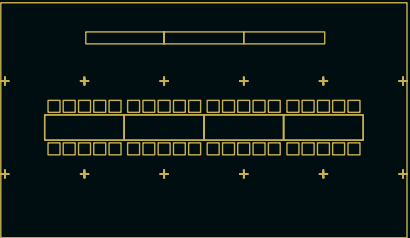
FACILITIES

- 1. Scullery
- 2. Back Of the House

- 3. Elevator
- 4. Kitchen
- 5. Sanitary ♂ & ♀

GOLD & BODYARCHITECT

- 6. Room B 7







Bodyarchitect

A healthy mind in a healthy body.

BINST ARCHITECTS believes in a healthy lifestyle supported by sporty team building activities: from running competitions and indoor football to short skis, they all contribute to the group dynamics from which we draw strength. In addition to the larger events our team organises, twice a week an evening sports session is held for everyone, led by Anja Deneayer, the inspiration behind Bodyarchitect.

We would also like to encourage you and your team to get to know each other in a different way. With suitable tailored advice for achieving both individual and team objectives. The basic principle of the sports sessions is to build up both mental and physical well-being, which results in positive ideas that increase creativity.

Training takes place in room B 7, to be booked at least 10 working days in advance. Sports equipment is available, all you need to bring is your own towel and a healthy dose of willpower to help us get the best out of you!

Maximum number of participants: 10 per session. Each session lasts: 1 hour.

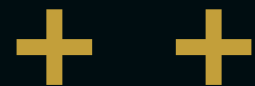


ANJA DENEYER
– Bodyarchitect

CONTACT
+32 (0)477 33 17 18
anja@bodyarchitect.be

WEBSITE
www.bodyarchitect.be

ADDRESS
Luikstraat 1 & 7
2000 ANTWERP



**Get the best out of yourself
and be revitalised with
a functional tailor-made
training session.**





↑ Photo shoot E5 Mode



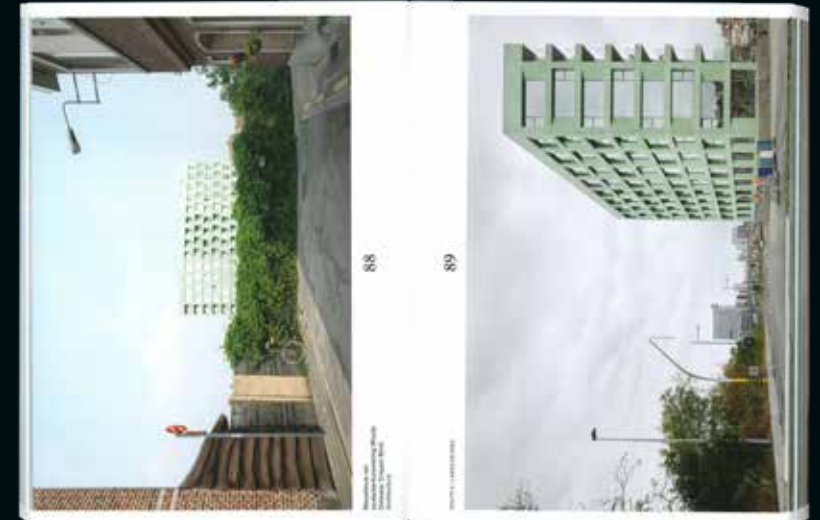
↑ Kom Op Tegen Kanker run

"OUT OF THE BOX"

↑ Knack Weekend



Balancing modesty and expression



GRAND OPENING RADISSON BLU HOTEL, BRUGGE

← mice-magazine.com



Beerschot Wilrijk - AFC Tubeke →



De interieurbijbel 5, Lannoo →

Study trip to Hamburg



Hafencity architecture — Hamburg ^D



Elbphilharmonie — Hamburg ^D

B thankful

With the B for building, business, brainstorming and branding, we wish to share our facilities on the ground floor and the new basement more widely under the abbreviation 'B 7'. In the meantime, we have introduced a programme of interesting guest speakers and many building-related initiatives as a framework for an autonomous think-tank or for building at Zuid! As an expert construction partner, in addition to being a robust practising firm, we would like to see greater scope for future research in the visionary approach to our social challenges and planning concepts by means of a refreshing approach!

- 29.10.18 VM Zinc
- 19.11.18 Ursus
- 26.11.18 Fort Security
- 21.01.18 Wall-LinQ
- 11.02.19 Lensvelt
- 18.02.19 Keim
- 18.03.19 Tile Trade Center
- 21.03.19 Modular
- 15.04.19 Assa Abloy



COLOPHON

AUTHORS

Binst Architects

EDITORIAL STAFF

Luc Binst
Eva Menger
Dirk Engelen
Luk Lambrecht (pp. 115, 118-120)

PROJECT COORDINATION

Luc Binst
Sigrid Hubloux
Sebastien Delagrange

PHOTOGRAPHY

Binst Architects
- Enak Baert
(cover, pp. 15, 20-23, 27-33, 43-45, 50, 94-97,
98, 104-105, 121-122, 126-127, 130-131, 133,
136-137)
- Nick Verbeeck, Philippe De Pauw,
Ruth Poppe, Sven van Loon
(pp. 136-137)

B brand

- Kris Dekeijzer
(pp. 100-101, 104)
- Wim Heyninck
(pp. 100-101, 104, 108-109)
- Building Group Jansen
(p. 105)
- Lensvelt
(pp. 110-113)

- Luc Roymans
(p. 102)
- Yannick Milpas
(cover, p. 103)
B scene
- Dirk Pauwels
(pp. 114, 116-117, 119)

B 7

- Tim Van de Velde
(pp.126-127, 130-131)

GRAPHIC DESIGN

Luc Binst
Mathieu Cieters (Studio Studio, Gent)

PRINT

Drukkerij Puntgaaf, Kortrijk

No part of this publication may be reproduced
or published, by print, photocopy, microfilm, or
any other means, without the prior permission
of BINST ARCHITECTS.

Copyright © 2018 BINST ARCHITECTS and the
author

Copyright © 2018 BINST ARCHITECTS and the
photographers

BINST ARCHITECTS
URBANISM ARCHITECTURE INTERIOR

Luikstraat 7
B - 2000 Antwerp
+32 3 213 61 61
www.binstarchitects.be



TEAM BINST ARCHITECTS

Andreas Porreye
Andries Daniels
Anja Deneyer
Anke Vandenbempt
Bas Van Der Horst
Behzad Talebi
Ben Depuydt
Caro Vermeiren
Cindy Hens
Dirk Engelen
Dirk Hendriks
Edgar Rodriguez
Edwin Remmerie
Enak Baert
Evi Van Schooneveld
Frederic Maurel
Gitte Anthonissen
Guy Mertens
Jan Geerts
Jasper De Roover
Joke Verstraete
Kenn Van Overveld
Kyra Van Dorst
Laure Denis
Liesbeth De Bock

Lotte De Witte
Luc Binst
Luc Reyn
Mathieu Cieters
Melissa Janssens
Mitra Rostami Gorji
Nick Verbeeck
Paul Van Den Bergh
Peggy De Bock
Petra Van Alsenoy
Philippe De Pauw
Philippe Vincke
Robert Osinga
Roxanne Delbaen
Ruth Poppe
Sebastien Delagrange
Sigrid Hubloux
Slavica Bosnjak
Stefan Schoonderbeek
Stephane Van Eester
Steven De Paepe
Sven van Loon
Thomas Cornelis
Tim De Cort
Vincent Kaptein
Ward Lagrain
Wim Heyninck
Zeno Claes

ABOHA