

+

COVER

BW

01



EDITO

EDITO

B01 is the first edition of the new magazine of BINST ARCHITECTS. It is our ambition to inform you twice a year about the evolution of our activities in the new office at 't Zuid. This first issue focuses on the transformation from old to new: the move, the new challenges for the team, the further exploration of the skills and DNA of BINST ARCHITECTS. We will also introduce our new facilities — B 7, B brand and B scene — and will thematically present a selection of our broad portfolio under the name 'Spotlight'. All this in line with our refined, sleek corporate identity.

L.B.

01

EDITO

05

BINST ARCHITECTS

06

A new chapter

10

In figures

12

Vocabulary

14

BIM @BINST ARCHITECTS

16

An indestructible substructure

21

LUIKSTRAAT N°7

26

Facilities

37

IN THE PICTURE ^{Woods}

43

SPOTLIGHT

46

Vertical compaction

64

Urban interconnectedness

92

Striking headquarters

115

IN THE PICTURE ^{Parkschool}

121

B BRAND

122

Cross

124

(High)Five

125

Magnet

127

B SCENE

131

B 7

140

COLOPHON



+

BINST ARCHITECTS

BINST ARCHITECTS

- + _____ A new chapter
- + _____ In figures
- + _____ Vocabulary
- + _____ BIM @BINST
ARCHITECTS
- + _____ An indestructible
substructure

A new chapter

BINST ARCHITECTS stands for the best of 45 years of experience and expertise, supported by a modern and dynamic approach that focuses on the powerful evolution of the construction medium and innovative cooperation models. As 'architects of tomorrow', our aim is to focus on innovative working methods, optimised housing and reinforced infrastructure that is more than contemporary.

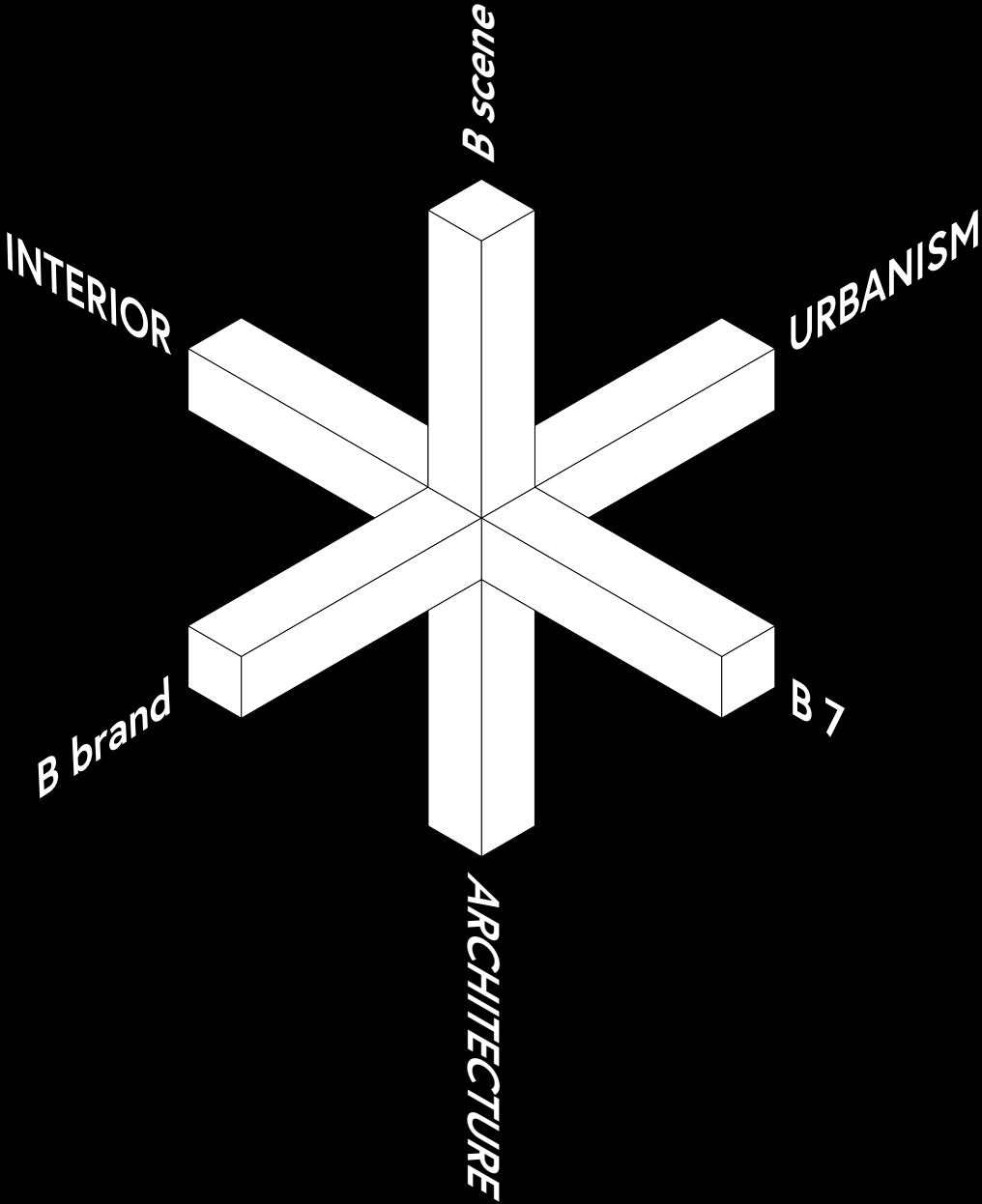
With a broad interest, a multidisciplinary portfolio and a strong mix in terms of scale and budget for our assignments, we provide efficient, expert guidance and supervision of all your construction plans based on an implemented all-round approach with our distinctive, wide-ranging signature.

As architects, our daily task is to increase awareness of urban ideas and architecture in a broad sense, as the future tools par excellence with regard to housing, working and the cultural life of the future, in short, as a medium for modern society. The things around us are becoming increasingly intertwined, and the experiential element is key! BINST ARCHITECTS wishes to contribute to this experiential level from the outset, and therefore in the project definition, and to express it in dialogue with our clients, all building parties involved, the City and its residents.

BINST ARCHITECTS strives for architecture that on a daily basis embodies 'abstract expressionism', characterised by a healthy balance between intelligent restraint and controlled expression! In short, 'positive architecture', originating from smart plans in line with the market, to current, controlled urban architecture and relevant iconic landmarks that are totally unique.

We write Architecture and Ambition with a capital letter because of our continuous efforts and our concern related to presenting our projects in an ambitious, professional and realistic manner. As a multidisciplinary firm, we represent a broad spectrum that brings us closer to the essence and function of a first-class firm offering many possibilities and an artistic presence.

We believe our constant focus on quality architecture and professionalism aimed at strengthening BINST ARCHITECTS as a renewed established value to be self-evident. In the uniform project approach in which mutual dialogue, information flows and efficiency are key, we deem it essential that, on a daily basis, projects are internally evaluated, assessed, compared and considered per category, and that the team seizes every opportunity for reflection.



Good urban planning
opts for contemporary
ensembles, controlled
diversity and multiple
architectures in a con-
vincing package.



Interior and architecture
form a whole and are
therefore inextricably
linked as a single creative
discipline.

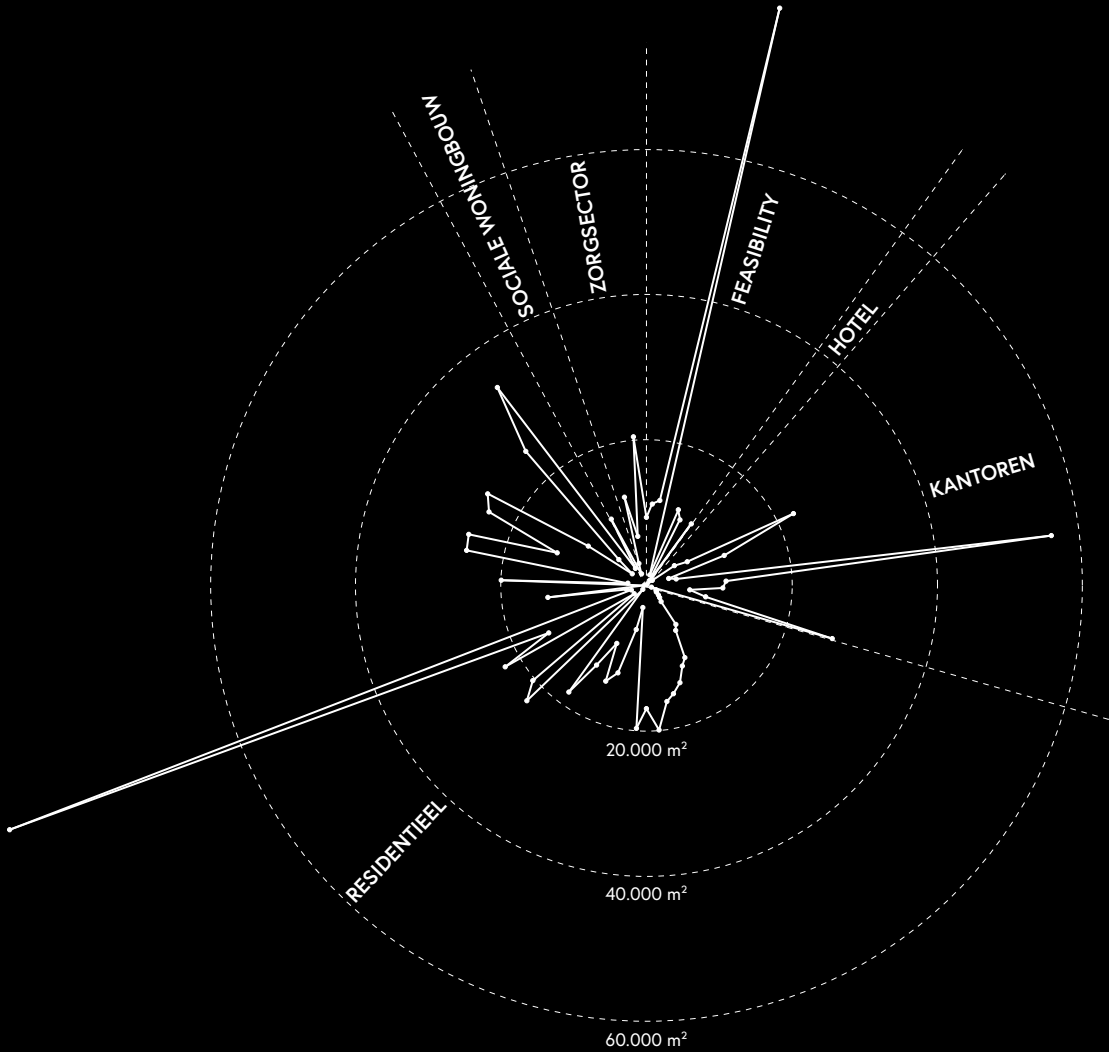
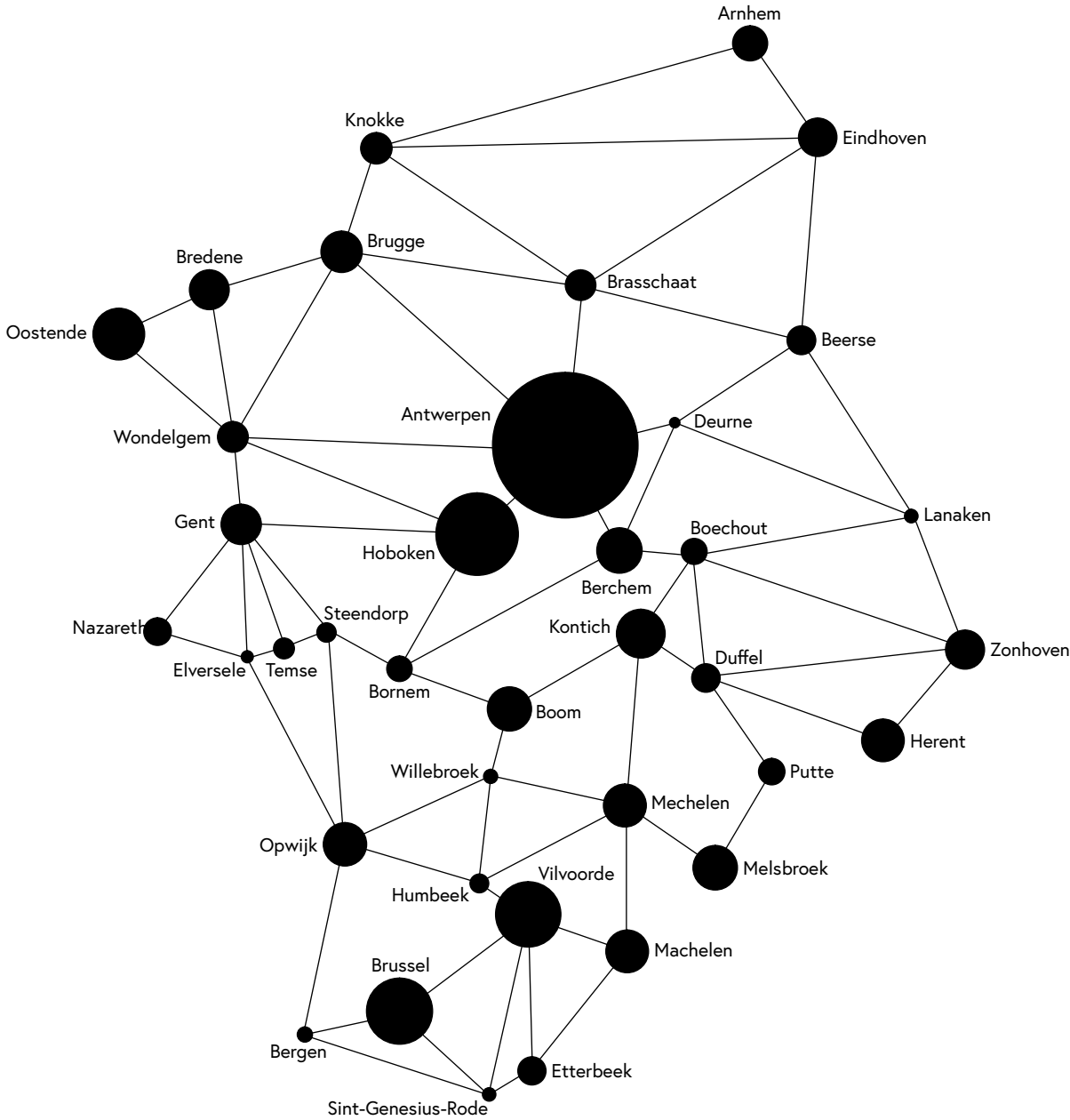


ARCHITECTS OF TOMORROW AND BEYOND
Tomorrow's architects liberate themselves, they reincarnate and cast off administrative ballast. They determine the rules of spatial planning, they are visionary world improvers. They are global, visionary, determine the workability of architecture and have a clear mission. They are the conductors of society, are praised by the political system, are healthy, self-willed. They reconcile, merge, strengthen, make architecture for tomorrow and beyond, look for a new statute, a new balance, make fantastic things. They honour ethics, show mutual respect and build on a visionary manifesto.
Over the past decade, our profession and our ethics have changed dramatically. Every day we face new wishes and needs. We are constantly looking for ways to improve and promote our goals. The role of the architect as coordinator, designer and facilitator is changing. Every day, he is challenged to adopt a more flexible, market-based and diplomatic attitude as a workable dialogue.
Tomorrow's architects will be forced to constantly rethink and to shift to a visionary approach. As the central mediator, they have to design architecture as a medium, with the greatest passion and with social relevance constantly in mind. They are the conductors of the future who bring new insights to the citizen, the builder and the government.
By uniting and defining common visions, the medium of architecture grows and gains in social importance and interest. Architecture has become the binding agent for good spatial planning of the future, where cooperation is more important than ever. We need each other as partners to collectively strengthen our society as an economic and urban development win-win model. Architecture unites. It encourages a society to share quality public space, to spend time together and to continuously improve our living and working conditions.
POSITIVE ARCHITECTURE
The concepts '(good) architecture' and 'positive' are intuitively synonymous. Good architecture and agreeable spaciousness are supportive, convivial and grateful. A cozy atmosphere has charisma, gives meaning, is therapeutic. A positive approach to architecture is also necessary to guarantee the future

workability and merit of the architectural profession. Being an architect is wonderful, virtuous, promising. The work is seasoned with enthusiasm, ambition, fighting spirit and an appetite for a better result.
Architecture requires courage, discipline, organisation and talent. A team that is consistently positive in the field, has an exceptionally strong ability to accomplish brilliant things, to give exciting designs a chance. We need these opportunities to make a difference, to work with our colleagues to raise awareness of the fact that architecture is a positive story.
MACRO
Architects must have the courage to think and act big, approach the problem and the solution with a helicopter vision. Macro-management, macro-architecture, macro-methodology and macro-vision: these are all means to view urbanism and architecture from a broader approach. Zooming out is enlightening, provides insight, supplies oxygen, puts things into perspective.
Think, act and prospect on a macro level and free yourself from the daily uncertainties in the waiting room of new projects. By means of an analytical and rational approach and by transposing our solutions to a larger scale and in other contexts, we find better solutions. Thus, on closer inspection, any apparent disadvantage may offer an advantage. It is precisely our challenge to think this through. Be macro, think macro and communicate macro. The world is too big to think small.
TOTAL VISION
Architecture with vision should be all-encompassing. It takes care of the details, knowing that they determine the whole. That's why our plans don't stop at the tangent of walls, floors and roofs. No, they merge into a custom-made interior, in which furniture transcends its functionality. The complete interior design unfolds into a lab of installations and sculptures, never submissive but a fully-fledged catalyst towards a renewed interior dynamism.
The design approach is a perfect machine to optimally explore new needs, materials and possibilities such as creative cross-pollination or try-outs across all categories.

In figures

Locations — current projects

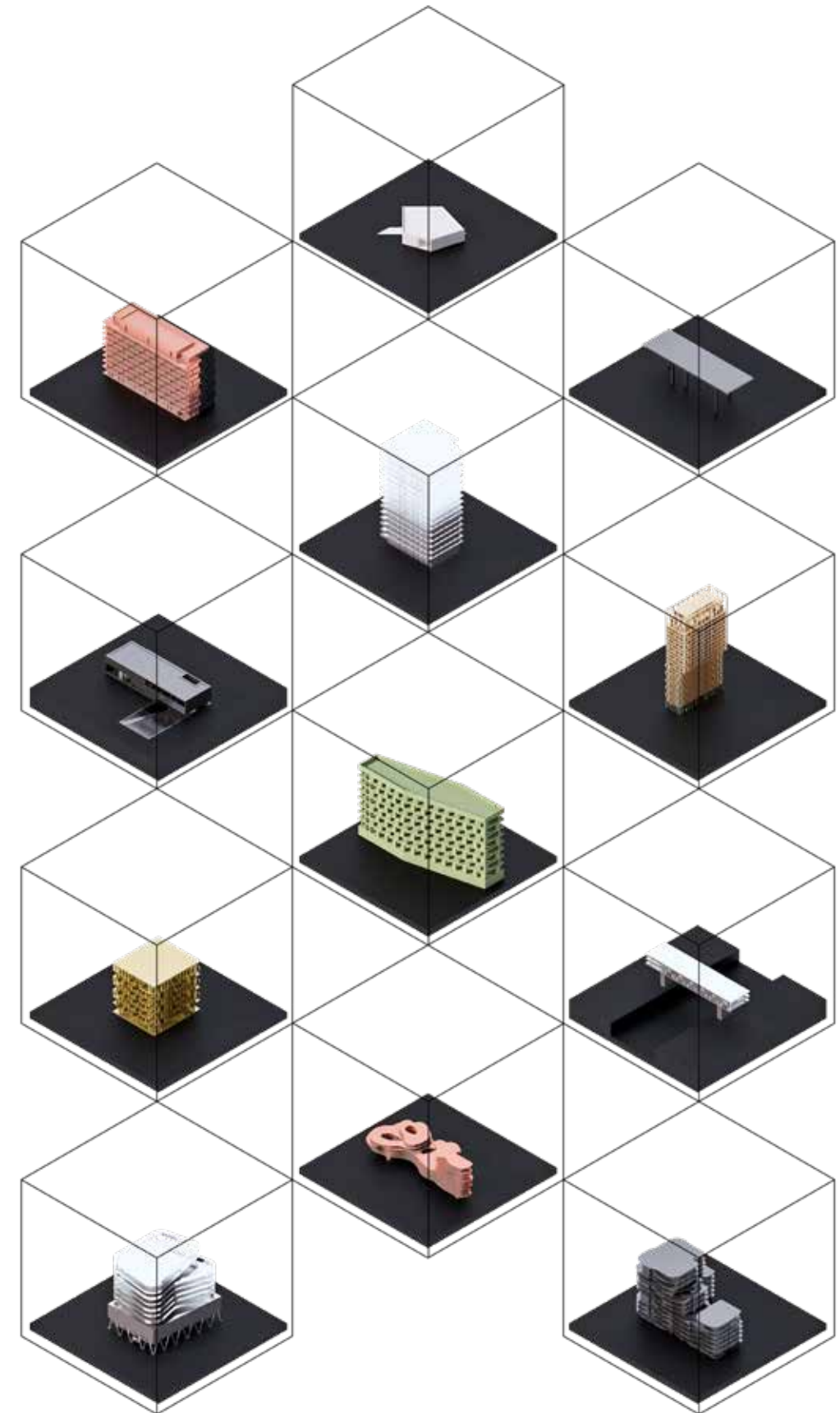


862.521 m² of total gross floor space — current projects

Vocabulary

+

Distilling our projects into small abstract objects, makes our work tangible on different scales and terrains, reinforces abstract expressionism in what we do and refines our vocabulary. It symbolises our mission statement: connecting creativity in a bigger approach.



BIM @BINST ARCHITECTS

BINST ARCHITECTS dares to look ahead and think further than today, which means that we cannot ignore BIM. We strongly believe that a more integrated cooperation between all construction partners is the only way to build a promising and more professional future.

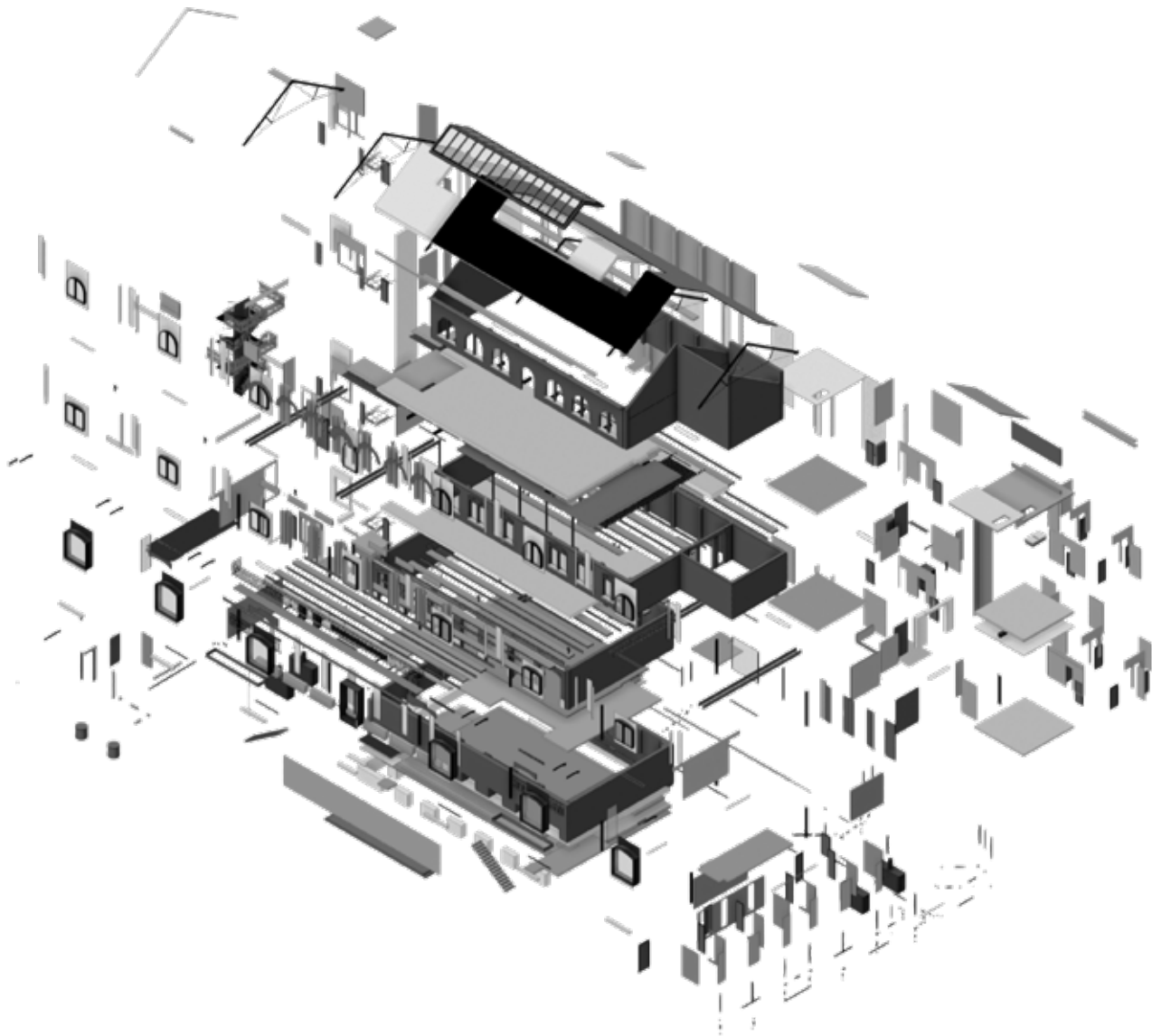
Building equipment is becoming more and more complex due to stricter requirements in terms of comfort, the environment, safety and maintenance. In order to cope with this trend, the traditional, two-dimensional way of working — with paper plans supplemented by information from the specifications — must be resolutely replaced. Today, we use building models in which the three-dimensional representation of the building is directly linked to the information in the specifications.

BIM is a working method based on collaboration and data sharing. The system stores all relevant information about a building over its entire lifecycle. This database is supported by a collection of interrelated, object-based 3D building models. Such a BIM process forms the basis of the entire life cycle of a building throughout the transition from a design model to a revised as-built model.

BIM is a broad concept that is often interpreted differently depending on the stakeholder. For example, for a contractor, BIM will be synonymous with clash detection or assembly. For a design agency, it involves modelling and carrying out analyses with those models. For a real estate owner, BIM refers to the management of a piece of real estate and the transfer of information. Together with the client, it is therefore necessary to determine which applications of BIM have an added value for his/her project.

International research confirms that the use of BIM has a positive impact on the total investment of a project. The three most important added value points that emerge from the research have a direct impact on the investment added value for the client. These include, in particular, costs of failure that are limited, global costs that are more accurately predicted and the lead time that is becoming shorter. In addition, the BIM process guarantees optimisation of the traditional project approach, which is reflected in improved cooperation and communication, both internally and externally, as well as providing more insight into the visualisation of the design.

In recent years, BINST ARCHITECTS has been fully committed to continuous internal and external training. We continue to invest in the most efficient hardware and software, as well as in increasing awareness among our construction partners.



Exploded view BIM-model — Luikstraat

An indestructible substructure

We rely on a diverse, close-knit and dynamic team of young passion, combined with mature wisdom. This bundling of enriching visions, interests and talents is successful precisely because of its diversity, with team members who are passionate about their profession and want to make a difference together.

+

+

**Great architecture
is produced by a
team and partners
who are thoroughly
inspired and
passionate about
architecture.**



Team Binst Architects

+ LUIKSTRAAT N° 7

Luikstraat 7, an address with history. Built as a storage place for rubber from DR Congo, successively converted into a parking garage, restaurant, discotheque, another restaurant, and now the new site for B brand, B 7 and BINST ARCHITECTS.

At this beautiful location between the Scheldt quays and the Gedempte Zuiderdokken, surrounded by the MuHKA, FoMu and Museum of Fine Arts, today we are opening our new facilities, as architects of tomorrow. A stimulating combination of state-of-the-art facilities in the former 19th century harbour district, solid brick architecture versus razor-sharp calculated steel, a decisively contemporary concept in a historical setting. A design-based experiment in which every design option has been fully explored and exploited. An architectural business card.

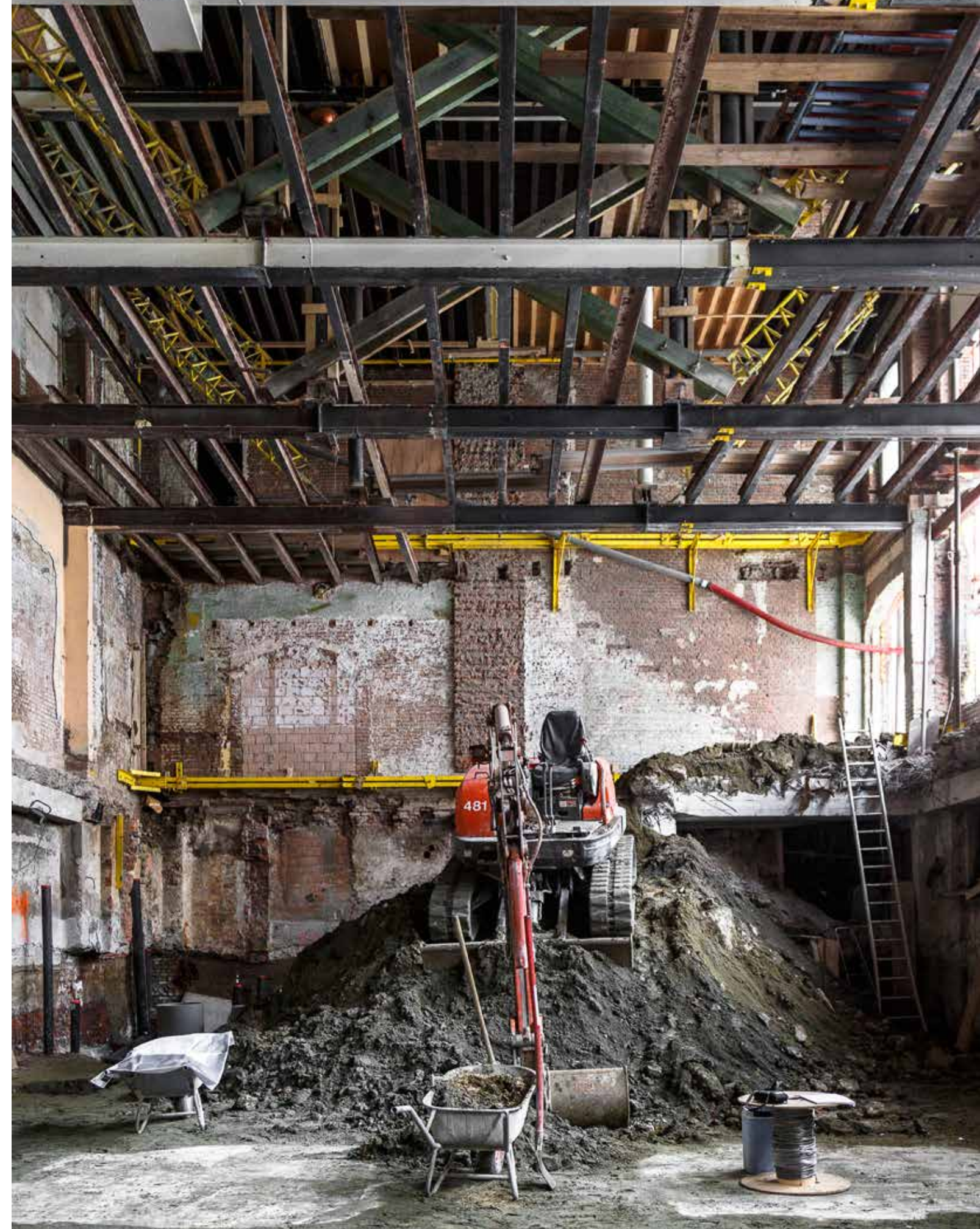
A few strategically chosen interventions transform the original warehouse typology into a resolutely contemporary office environment. A graceful steel, New York style balcony adds a subtle contemporary touch to the authentic brick facade, an image

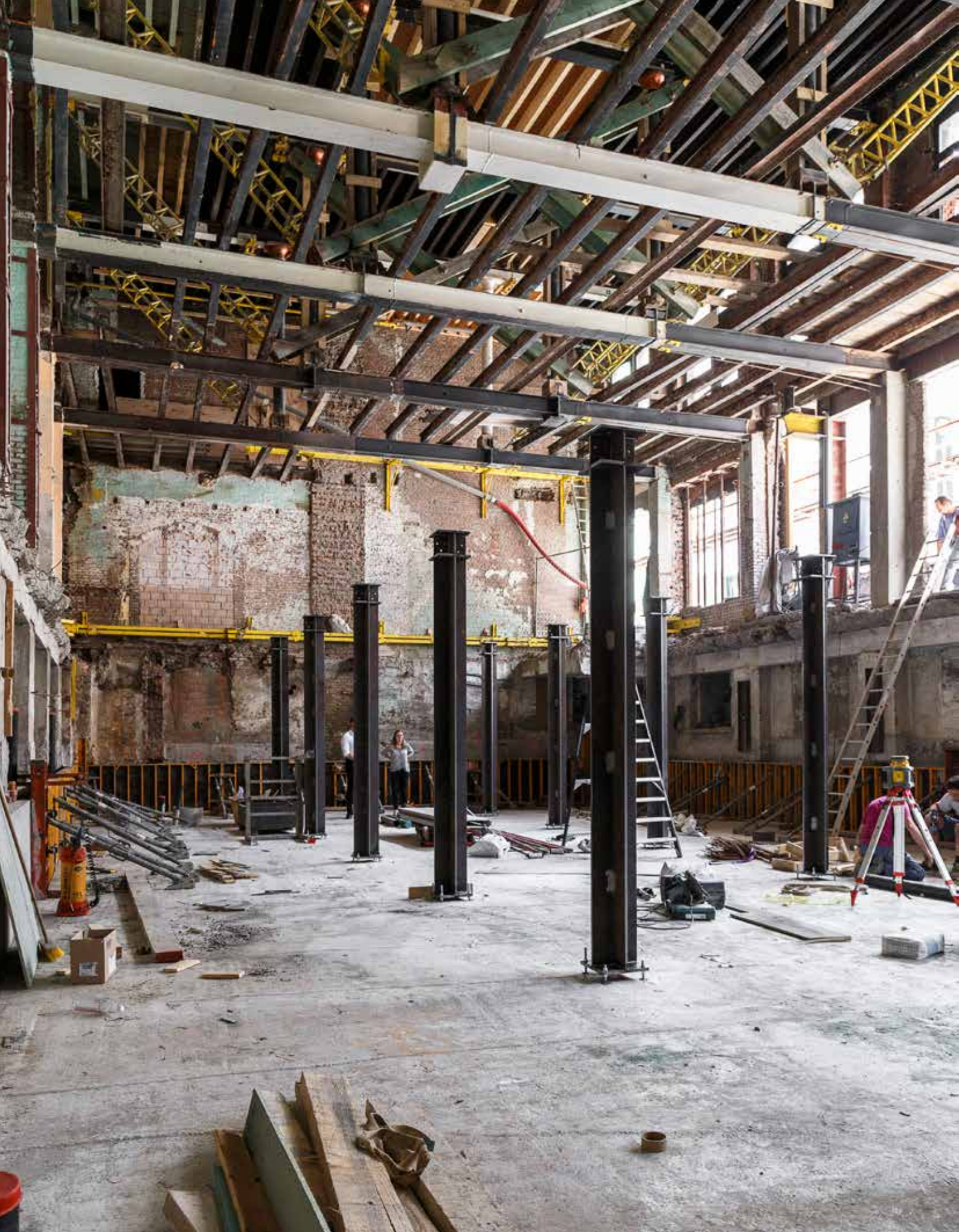
enhanced by the black pointing. Deep reveals refer to the original facade openings and frame the views inwards and outwards. Inside new steel cross columns, on top of a spacious skylight that allows daylight to pour in at the bottom of a cramped basement that has been transformed into a multifunctional event space.

Inside a series of four different atmospheres, which nevertheless, exude a clear architectural unity. Under the roof an almost sacred space, up to eight metres high, with the dome above the original Polenceau trusses as the main eye-catcher. Below, a genuine warehouse floor between cast iron beams and columns, painted black and combined with oak block flooring in end grain wood. On the ground floor brick arches are combined with almost invisible windows. Finally, a large open underground space, built completely under the existing building and in an expressive palette of materials: white and black terrazzo, brass and mirror stainless steel. The technology required for all this has been invisibly integrated.

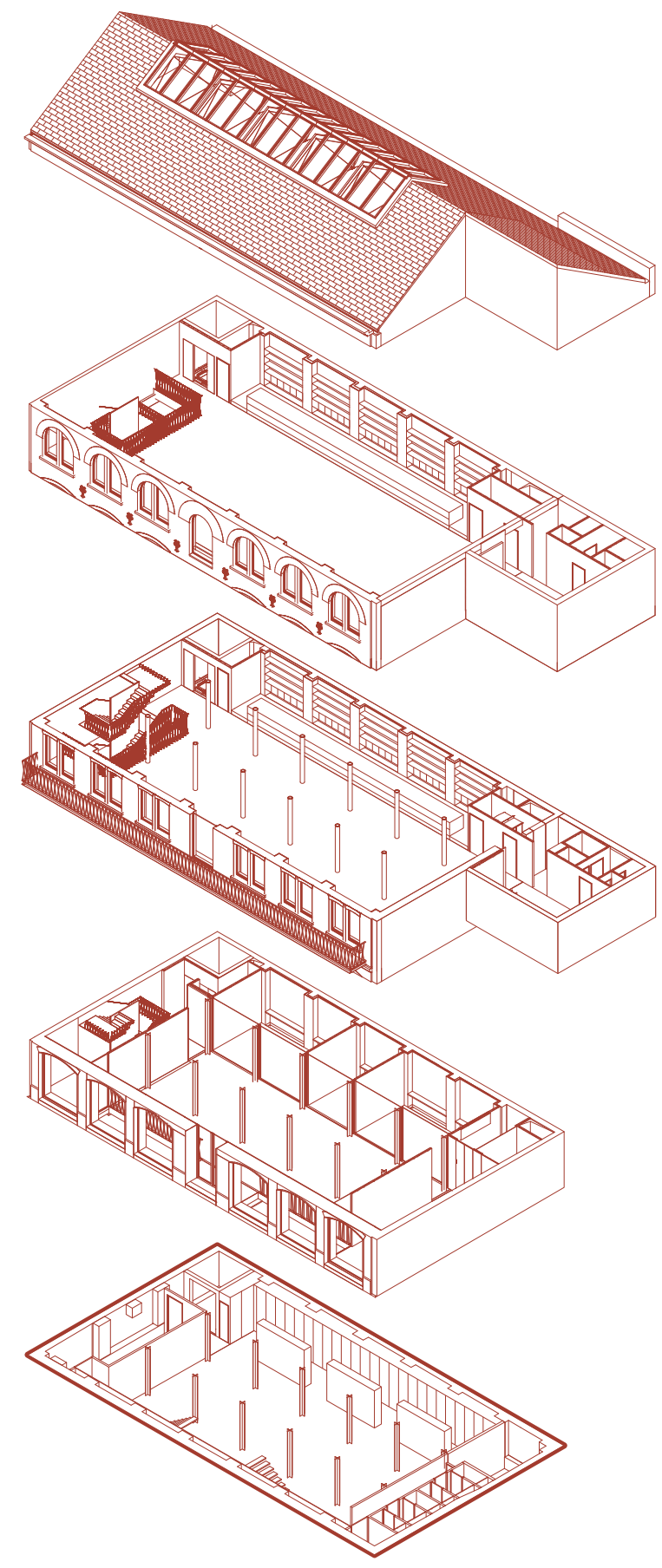
A few custom-designed specials make it complete: the on-site welded and lacquered steel staircase sculpture, the elegant balustrades, the traditionally-crafted wooden conference table, the brass kitchen wall, and especially our catering terrace in black stained wood, right in front of the door.

Authenticity and innovation blend to create a seamless whole as a result of particularly intensive renovation work. BINST ARCHITECTS in Luikstraat 7: a new name at a new address with renewed ambition.





LUIKSTRAAT N°7



Facilities

- + Building as a driving force
- + Machine of home automation
- + Branding
- + VR presentations
- + BIM approach
- + Skype For Business
- + Venue
- + Networking
- + Billboards / Projections
- + Conference facilities
- + Flexibility to work differently
- + Clean Desk, Clear Minds



A building in which reflection, networking and progress are paramount, supported by modern, first-rate facilities as a single ambitious artistic address for dialogue and collaboration.



Stairs to the ground floor — Luikstraat



LUIKSTRAAT N°7



Ground floor with cross columns — Luikstraat

Meeting facilities — Luikstraat



Sculptural staircase — Luikstraat



Working places — Luikstraat



Working islands — Luikstraat



Future park — Gedempte Zuiderdokken, Antwerp



+

IN THE PICTURE

WOODS

LEUVEN





+

SPOTLIGHT

SPOTLIGHT

- + _____ Vertical compaction
- + _____ Striking headquarters
- + _____ Urban interdependence





Vertical compaction

"THERE'S ONLY ONE WAY LEFT TO GO AND THAT'S UP!"

Since the announcement of the concrete stop, the exponential increase in traffic jams and the growing climate problem, we have to change the way we build in order to be able to define sustainable solutions. The 'urban sprawl' and the typical Flemish ribbon development have degenerated into harmful excesses; we must now dare to think about the 'vertical sprawl' and vertical compaction. The lavish occupation of open space followed by an inseparable need for road and utility infrastructure — even in the smallest hamlet — is being met, more than ever, with opposition.

We must therefore seize this momentum to dare to break with urban development conventions and focus on a change of mentality that will benefit the country in general and the city in particular. After all, many urban locations have the urban development potential to achieve growth in terms of height.

The city of tomorrow will compact itself out of necessity in the third dimension, and will translate into high-rise as a new entity on top of the existing urban fabric. The high-rise building avoids the busy, noisy city bustle, focuses on the horizon and reinforces the relationship with nature with its green terraces - a worthy urban alternative to the suffocating Flanders subdivision.

FRAMING THE VIEWS

The combination of light, air and views formed an important basis for the design. How the views can be 'framed' and how the architecture is positioned within its surroundings, contributes to the right look for the tower.





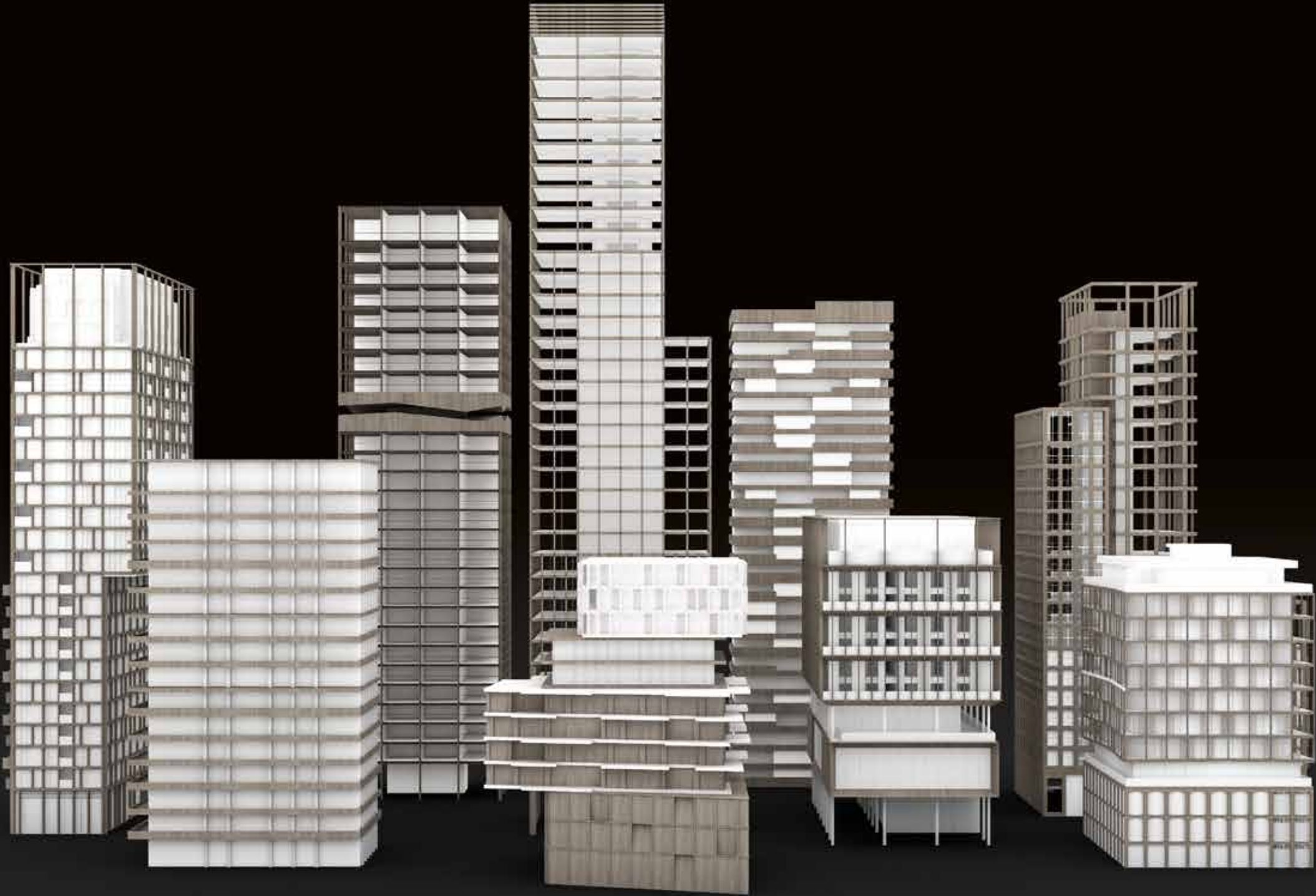
+

+

A tower as an architectural sculpture, a quietly built story, slender as a needle, which, thanks to its strikingly wider superstructure, claims its place as a recognisable icon and waterside beacon.



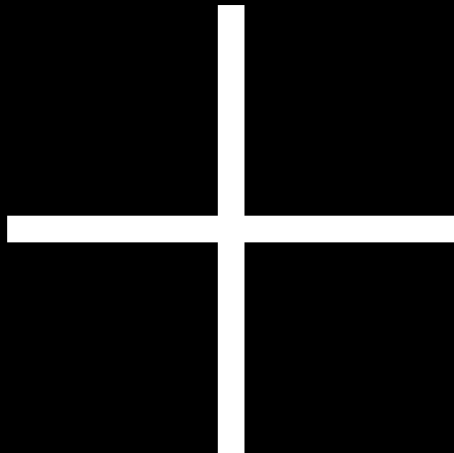
Overview models of current high construction concepts





SPOTLIGHT

VERTICAL COMPACTION



SPOTLIGHT





Competition design Loodswezen, Antwerp — THV Aanneming Loodswezen



Tower Strijp-S, Eindhoven ^{NL} — Spoorzone BV

+

+

**Relationships are crucial.
A building that stands
like a mini-Manhattan and
effortlessly transforms
itself from unwieldy
volume into a fascinating
part of the city:
1+1+1 is more than 3.**



+ +

Towers are beacons in space and time. They announce a new place and mark a new beginning.



+ +

Architecture is built over and over again with the same familiar ingredients. You can continue to amaze by approaching familiar themes puristically with a refreshing approach.

Urban interconnectedness

Urban architectural challenges turn the city into an abstract composition, which uses its sculptural qualities to add powerful touches to the cityscape. Refreshing architecture that consistently subscribes to the urban fabric in turn creates a dynamic: the activity and diversity of life in the metropolis stand out against the stateliness of the built-up city.

Since the development of attractive smart living concepts always meets the demands of Weiterbauen or Freibauen, we inherently aim for controlled innovation and workable diversity in our own design language. In this respect, we constantly strive to achieve quality restraint.

+

It is our task to be continuously attentive and visionary in the evolution of living and building methods, in exploring the research and dreams that strengthen our creative innovation.



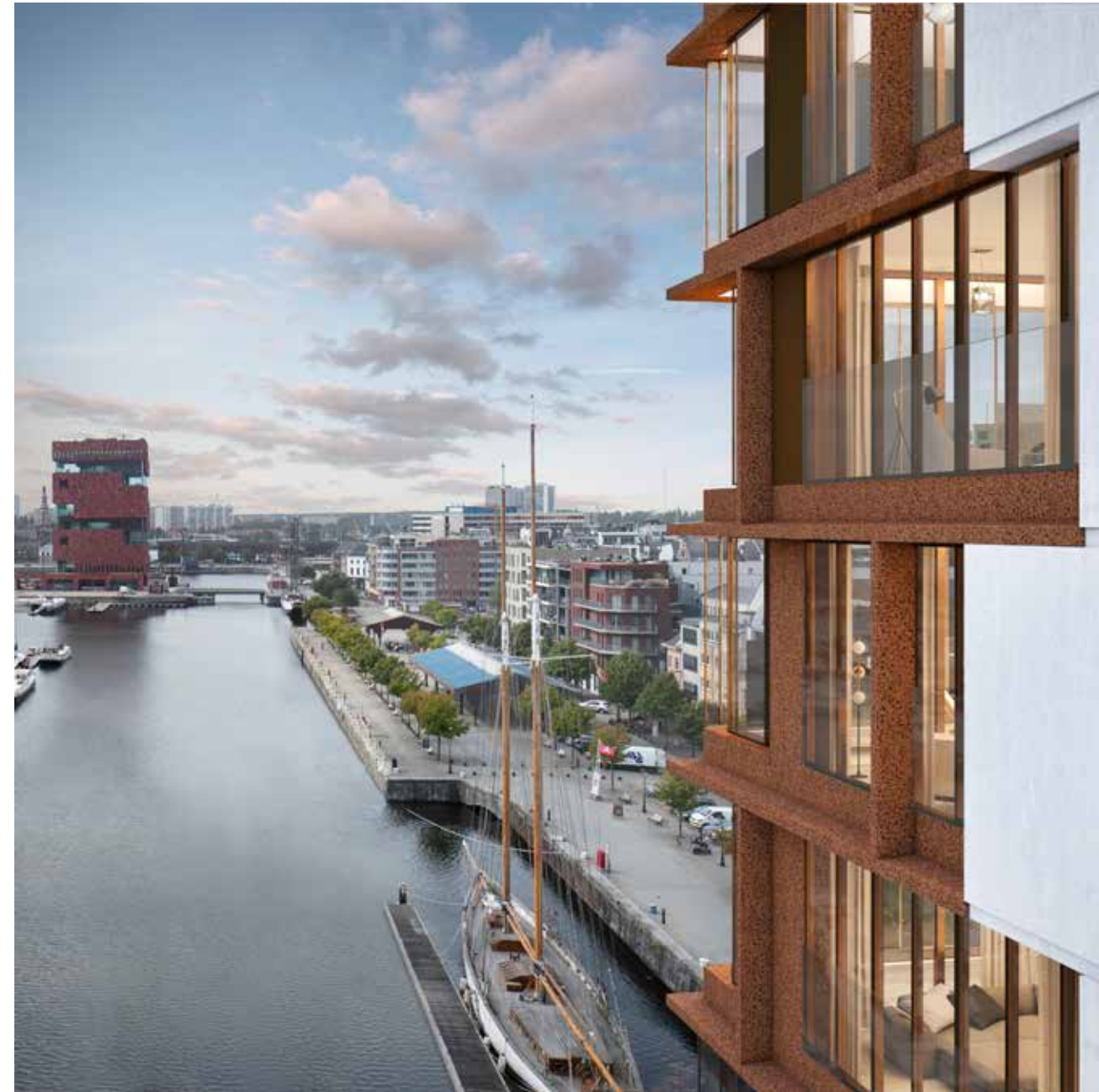
Apartment building Jordaenskaai, Antwerp — Vlaamse Poort & Bermaso



Residence Eiland, Antwerp — Vlaamse Poort & Pluczenik Group







Residence Aequor, Antwerp — Vlaamse Poort & Bermaso

+

+

Architecture can work based on a strong sense of modesty or necessary expression.





Demolition works for Residence Aequor, Antwerp — Vlaamse Poort & Bermaso





Diversity in architecture and variation in housing typologies are always paramount in the current 'Belgianisation' of large-scale housing projects.





Groen Zuid, Hoboken — Cores Development





Our architecture stands for a far-reaching abstraction and structural dynamism that promotes our projects through new archetypes.



Groen Zuid, Hoboken — Cores Development



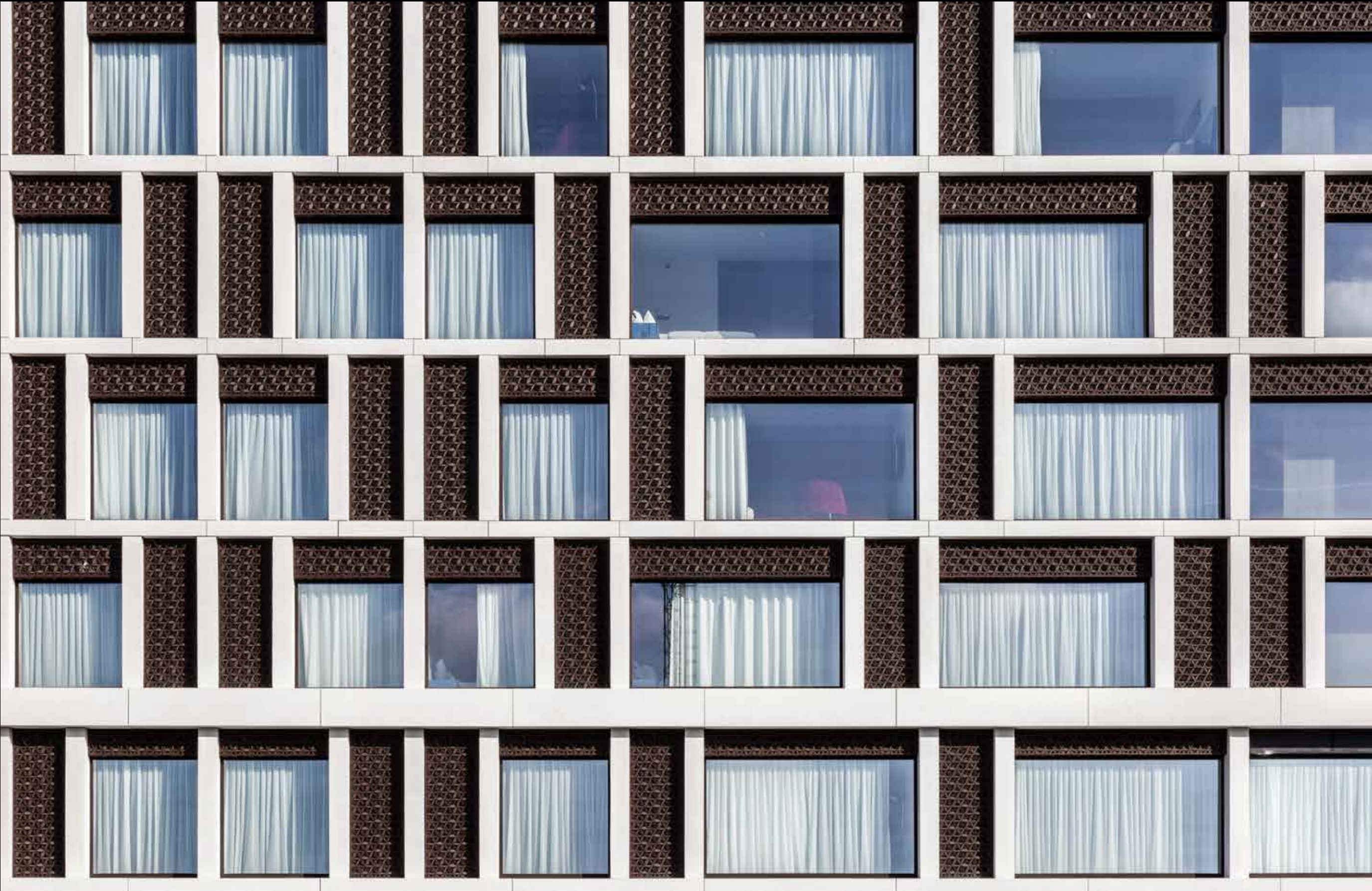


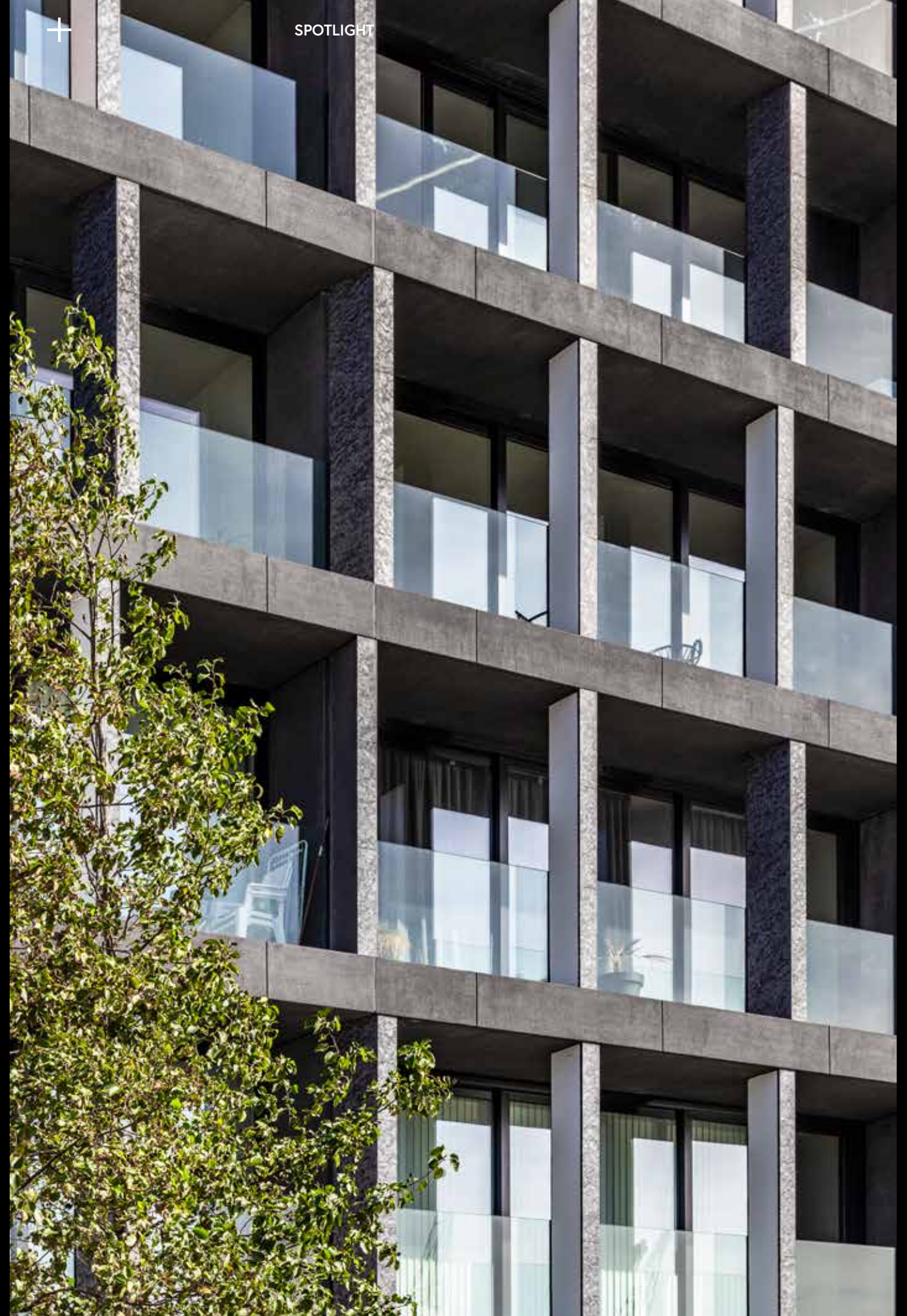
New Bruges lot 3B, Bruges — Group GL





New Bruges lot 3B, Bruges — Group GL







+

+

Creating architecture is like writing a symphony in which you become familiar with the sound so that it can elevate itself to a hit.

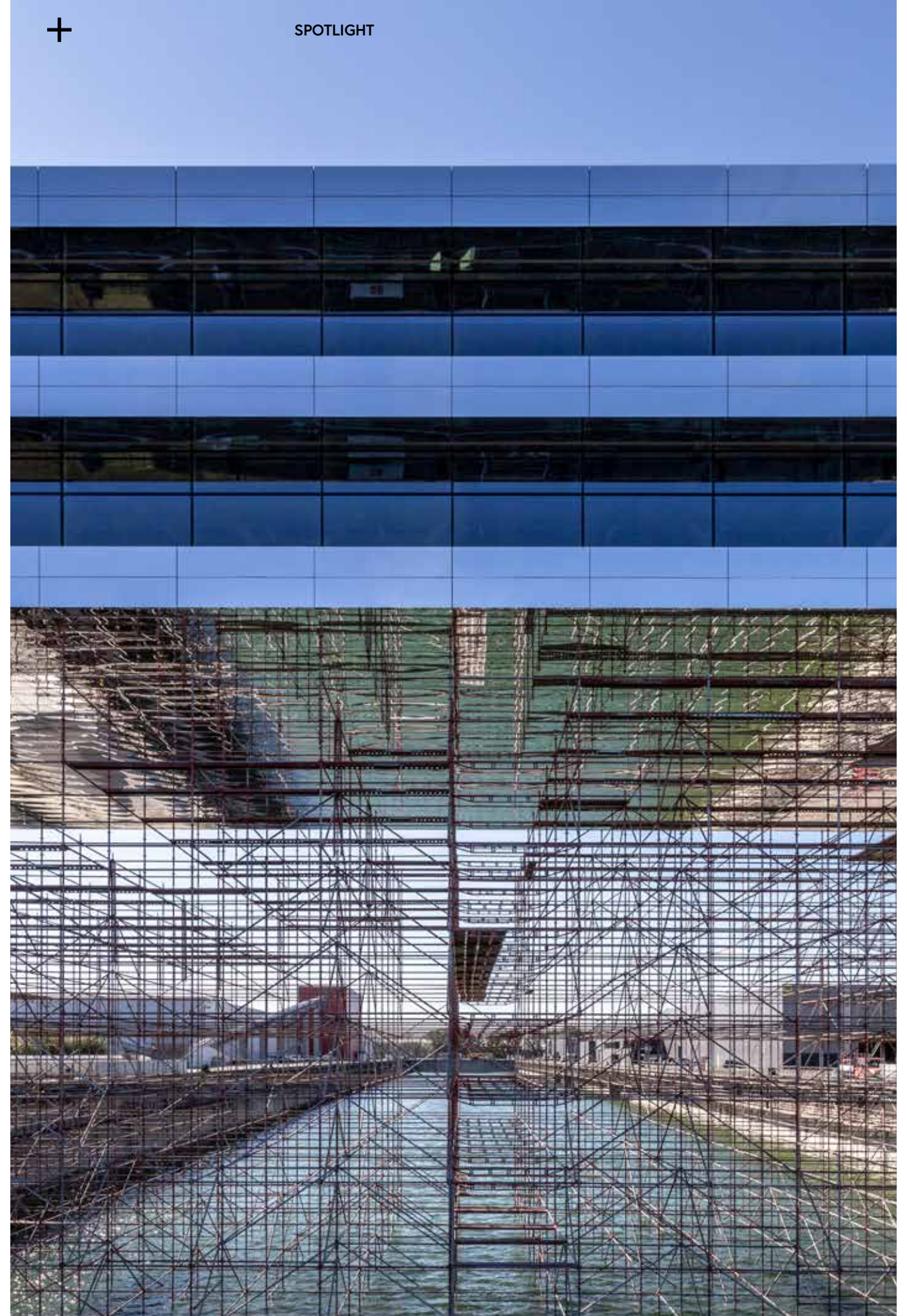
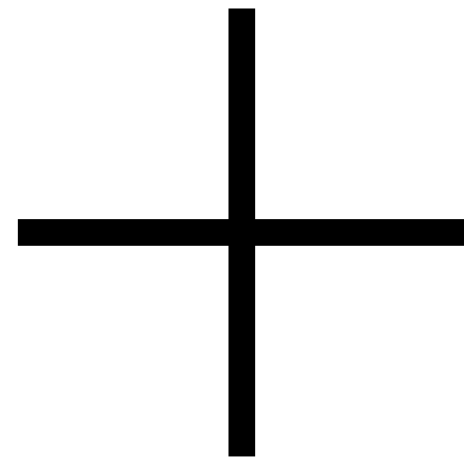


Striking headquarters

Headquarters are a company's prominent face and require architecture that conveys and reinforces the company's image and mission externally. We consider a request to design a headquarters to be an honour that motivates us to look for extra added value, inspired individuality and architectural identity.

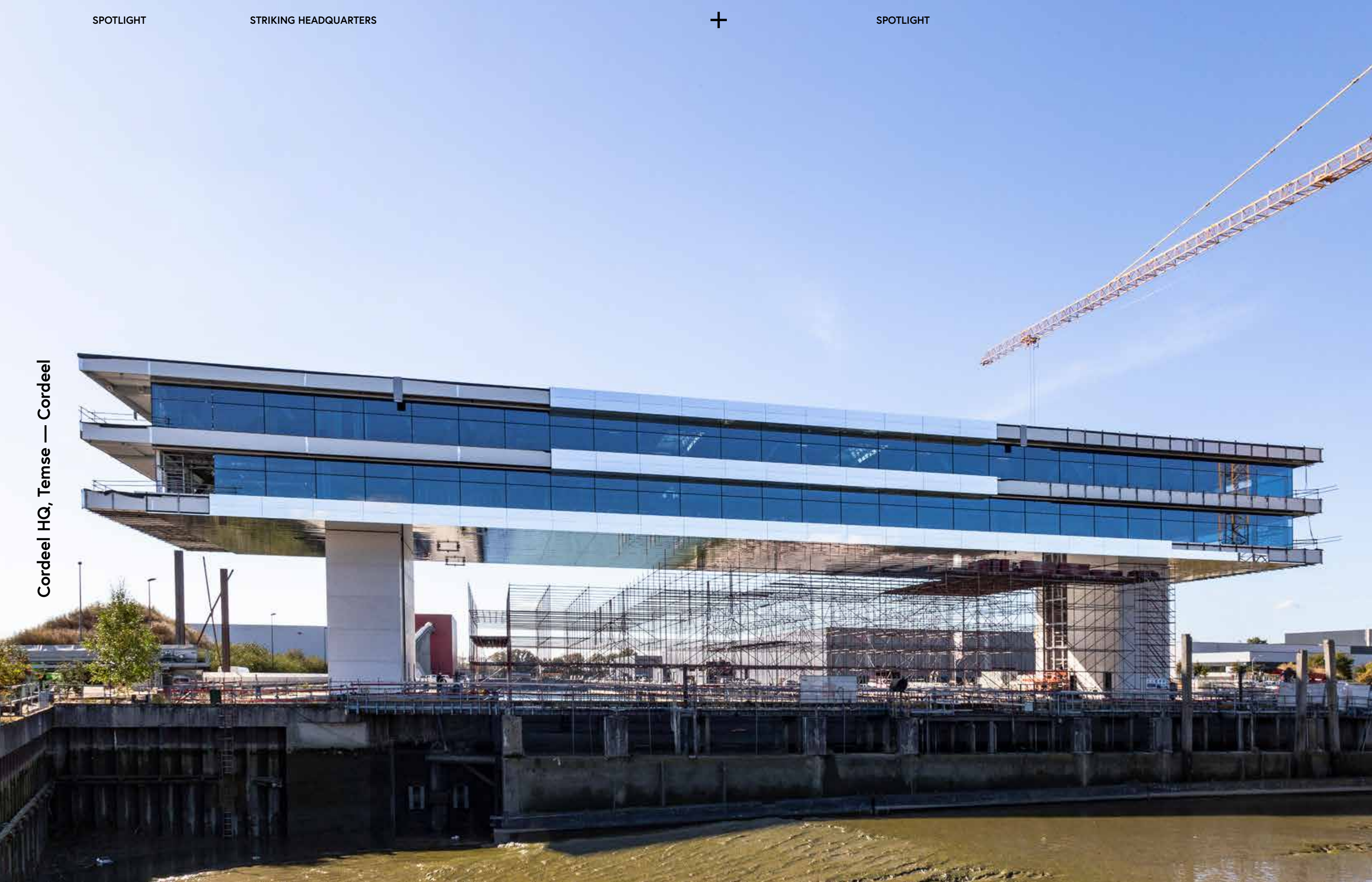
Headquarters portray a company's philosophy and at the same time become a flagship and signpost. The headquarters as a beacon of corporate branding; the combination of beating heart and inventive mind makes it much more than just an office building. The acronym HQ not only stands for HeadQuarter, but also for High Quality.

Architecture as a positive lever for sustainable corporate identity: the headquarters is the symbolic melting pot of a sculptural statement, a materialised milestone and a proud signpost. Headquarters are considered to be new magnets of identity and economic ambition.



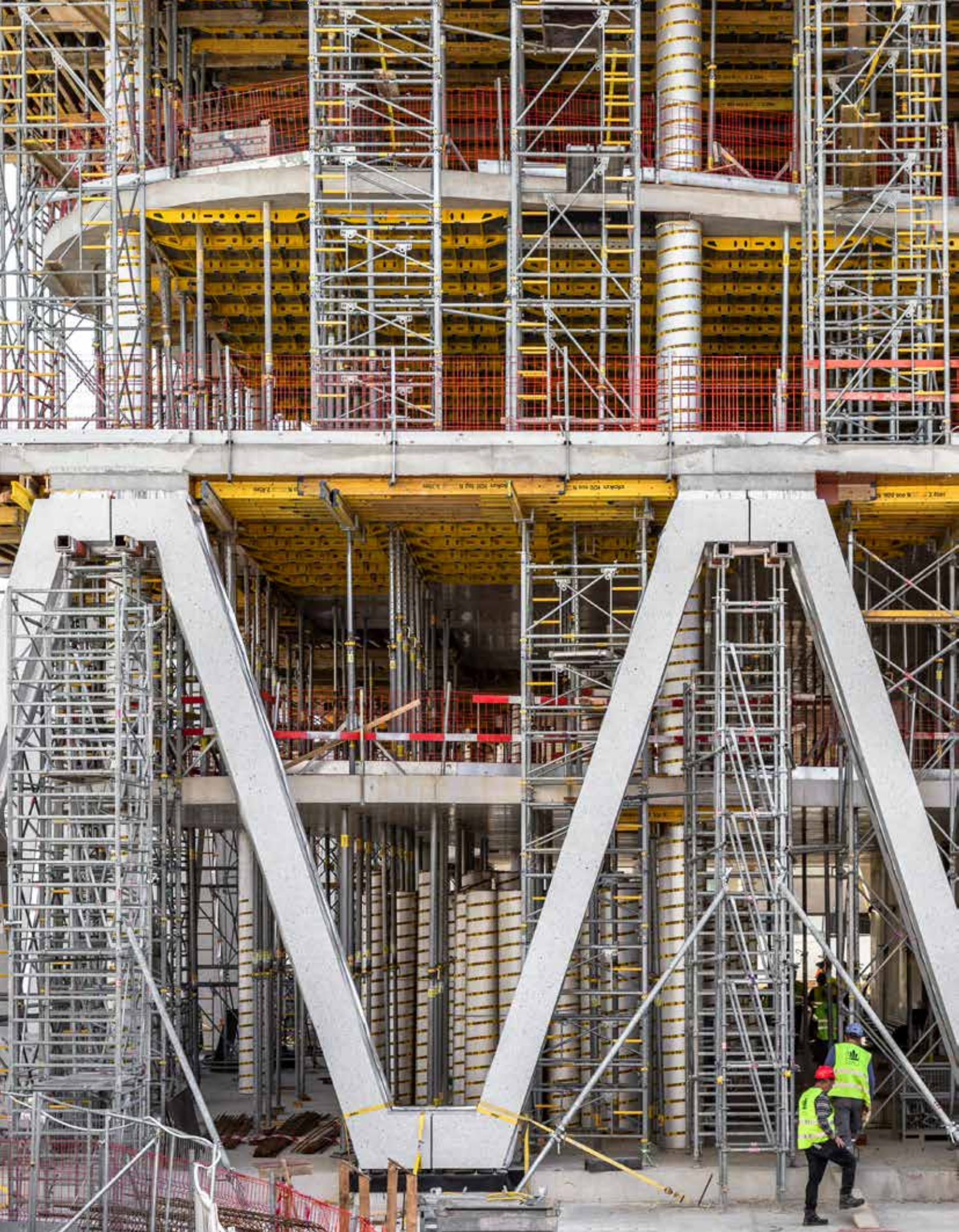


Cordeel HQ, Temse — Cordeel





De Persgroep HQ, Antwerp — De Persgroep



SPOTLIGHT





Current webcam image of De Persgroep HQ, Antwerp — De Persgroep





Renson Outdoor HQ, Kruishoutem — Renson

+ +

Tomorrow's highways are the backbones of new urbanism, statements, landmarks and line marks. Architecture as a 380 meter long pavilion and billboard by Renson Outdoor Experience.



Drone image of Belgian HQ Loyens & Loeff, Etterbeek — AG Real Estate





Expansion Denys HQ, Wondelgem — Denys





DCA HQ, Beerse — DCA





+ +

Architecture is the positive lever in office construction that strengthens a company's economic apparatus exponentially.



Renovation of the Galilee building for Riziv, FAGG & FOD VVVL, Brussels — Belfius

+

+

30.000m² upgraded to the concept of the new way of working with accompanying conference facilities.

+

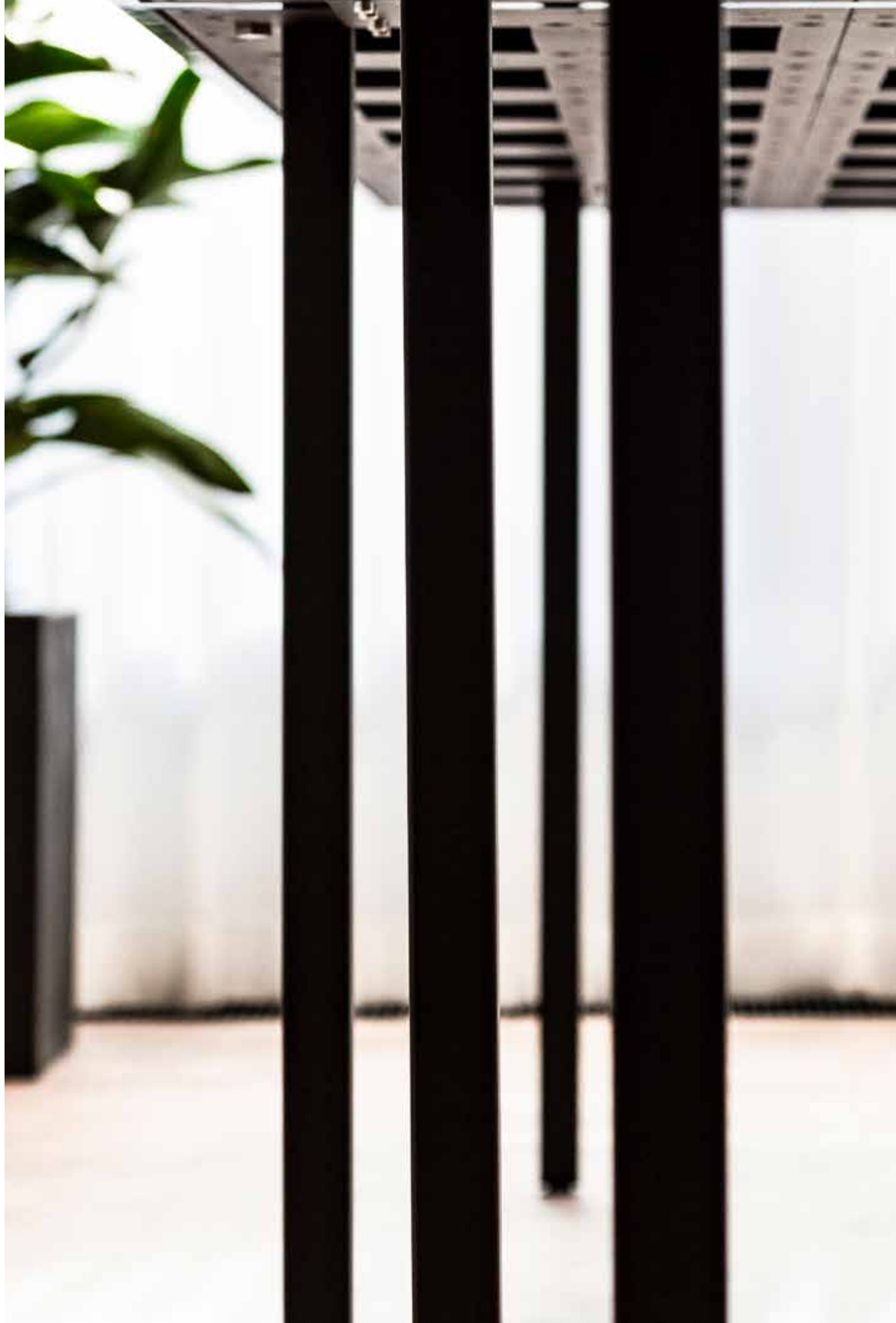
IN THE PICTURE

PARKSCHOOL

MORTSEL







B BRAND

B BRAND

B brand is a newly established design studio in Antwerp under the name of BINST ARCHITECTS that focuses in more detail on: branding, exhibition concepts, product development, the design of our own furniture in cooperation with international manufacturers such as Lensvelt, Bulo, Modular, and exquisite interior assignments on a private scale.

Guided by the strategic thinking of a compact, strong team of interior architects and designers including Wim Heyninck, Ben Depuydt and Sebastien Delagrange, and by our visionary thinking, B brand delivers stunning solutions based on results that inspire.

A sophisticated, high-quality end product reinforced by powerful lines and a well-thought-out design that reflects the soul of craftsmanship and honest materials.

We are proud to launch the design of 3 new tables called 'CROSS', 'FIVE' and 'MAGNET' with our introduction in this issue.

CROSS

CROSS is the symbolic name for an exceptionally sturdy 5m-long single-piece oak table supported by 3 black steel cross columns as a 'triple plus' installation that can be used for a wide range of applications. From a conference table to a private desk to a room-enhancing sculpture. With CROSS we are introducing an atypical table object offering first-class craftsmanship in collaboration with Casimir and Tamco metals company.

"CROSSover your ambitions", "CROSSover your dimensions", CROSSover your choices".



Cross detail — CROSS table



CROSS table

(HIGH)FIVE

FIVE is a new, atypical five-legged table concept in association with Lensvelt, a modular system that can be used in various configurations. The odd number of legs necessitates an odd number of chairs, whether the table is used by dinner guests or as a desk for one. The HIGH FIVE is also available as a bar-height model.

Be our guest at table FIVE.



FIVE table

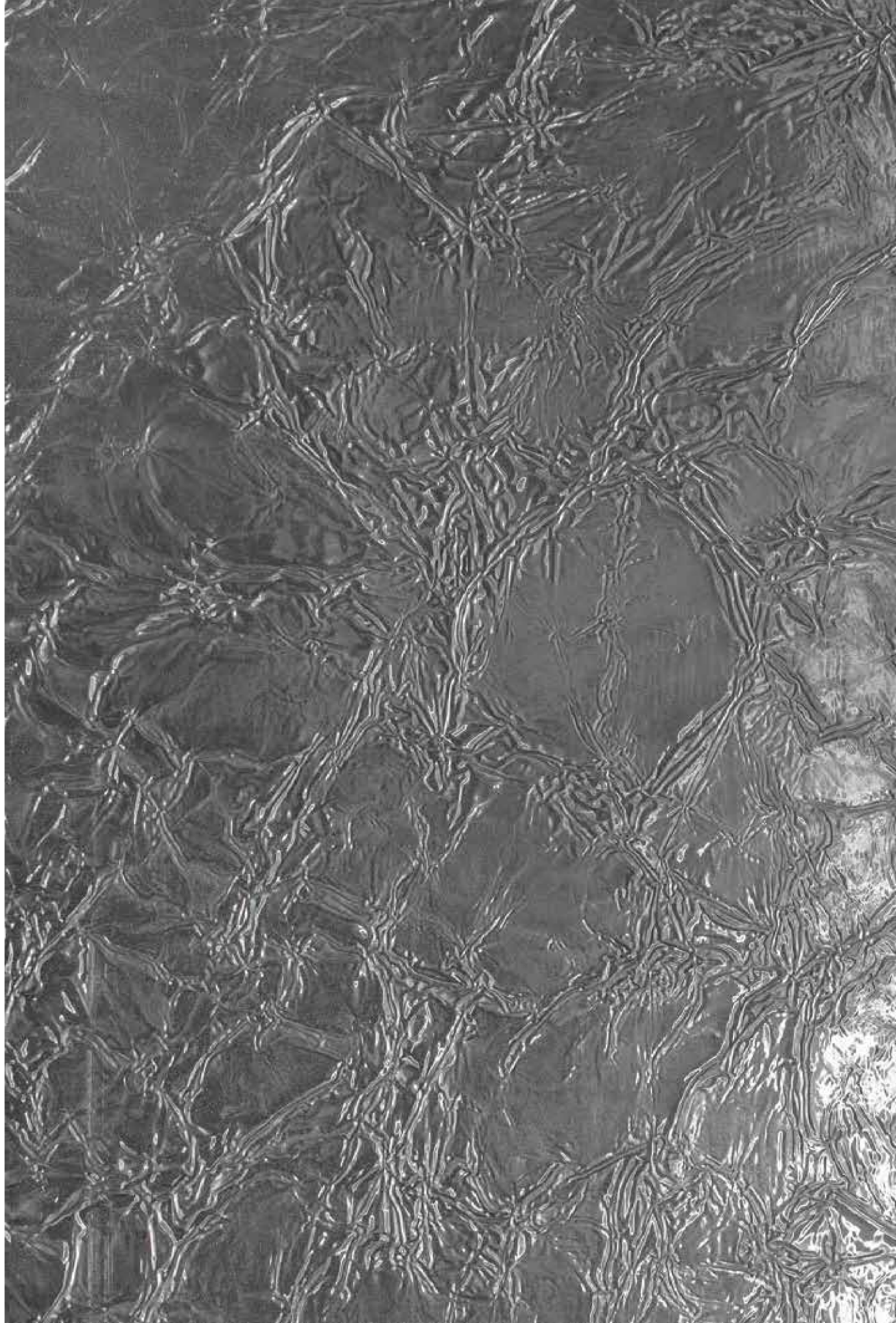
MAGNET

MAGNET is a new trestle table, designed with a penchant for minimal design. The transparent plexiglass tabletop floats like a sheet of paper above two L-shaped steel supports in matt black lacquerwork. Their sleek configuration makes the design stable, slim and elegant. Thanks to the simple magnetic connection of the L-strips, the tabletop and frame can be quickly disassembled and stored away.

Be a MAGNET at our table.



Table detail — MAGNET table



+

B SCENE

B SCENE

In addition to our new location at 7 Luikstraat, we are also opening another completely new location, with its own unique story and raison d'être. A place for unfiltered and unrestrained exhibitions. A space that stands alone and where contemporary art comes to life.

Every year, this concept by Luc Binst and curator Luk Lambrecht will focus on four thematically linked formats: spring, summer, autumn and winter. Think of it as an iconic billboard where international art and architecture intertwine. Projects become objects, which in turn perfectly correlates with our mission: to channel the right connections, creativity and ambitions.

The aim is to put cross-industrial interactions in the spotlight and to manifest the underlying interaction. This space becomes an ode to the abstract expressionism that characterises our work, which in turn reinforces our approach in the design spectrum.

+

+

**<B Scene/Be seen>
during a visit to
Cockerillkaai 34.**

Günther Förg — Bouquet

25.10.18—13.01.19

Günther Förg (1952-2013) left behind a stunning oeuvre in which all media from painting and drawing to photography and traditional sculpture engaged in dialogue with photographs of his circle of friends and of architecture ranging from Giuseppe Terragni to Bauhaus and the Casa Malaparte by Libera on Capri. With mirrors and breathtaking murals, Günther Förg managed to relate with bravura and freedom to the legacy of modernism.

Förg managed to find the perfect balance between colour and medium, whether it was a lithograph, a drawing or a painting; he always managed to achieve a unique aesthetic unity that made a difference with his contemporaries. Artist Blinky Palermo served as a great example for Günther Förg who, according to him, "made a personal contribution to the long history of mural painting and drawing".

In the autumn of 2008, Luc Binst designed and developed 3 types of parallel walls for the exhibition hall of Cultuurcentrum Strombeek, to which Günther Förg responded by instinctively designating 4 colours, which coloured all the interior walls in an even way.

It became a lesson in symbiosis between freestanding architecture and colour. The choice and power of colour on the architecture retranslated it into a special space.

The opening of B scene made an exhibition with Günther Förg self-evident. 'Bouquet' will be a compact, even a mini-retrospective exhibition in which most of the aspects of this masterly oeuvre will be discussed. Significant paintings on canvas and paper, a monumental photo from the 'Bauhaus' (Tel Aviv) series, a spatial 'play' between a portrait photo and a mirror, a study for murals and a small sculpture reveal a glimpse of Günther Förg's mastery.

L.L.



Untitled, 2008

NEXT ON VIEW

Luc Deleu
— Spring 2019

Patrick Van den Eynde
— Summer 2019

Michel Verjux
— Fall 2019



B 7

B 7

THE OFFICE OF TOMORROW

Binst Architects' move to the new office in Antwerp Zuid is much more than just a move to a better location. This new location symbolises an approach that is wider across the board: further deepened and inextricably anchored in architecture.

Expect a vibrant working environment with plenty of room for development and training. **B**uild connections and plan projects there with different teams and people. Together, we are creating an identity on which you can base your **B**randing; a **B**reeding ground for ideas and creativity. Consider B 7 as a **B**illboard for Belgian construction partners. With collaborations as a starting point, and with a view to sponsors who join your story.

This is how we set up a true **B**DNA, which operates as a company for international commitments. **B**e present when Luikstraat 7 in 2000 Antwerp comes to life as of January 2019.

B UILD
B UILDINGS
B USINESS
B ACKBONE
B RANDING

B RAINSTORM
B ILLBOARD
B DNA
B OOKS
BE DRIVEN



Together with our construction partners, manufacturers and developers, we are happy to make our facilities available as a reflective hub at Zuid, under the name B 7.

Building connections and creativity.



AkzoNobel



CASIMIRATELIERS



TONDAT







+

COLOPHON

AUTHORS

Binst Architects

EDITORIAL STAFF

Luc Binst
Johan Geerts
Jill Mathieu
Jules Furthur
Sebastien Delagrangé
Bert Pieters (DIFT, Ghent)

PROJECT COORDINATION

Luc Binst
Sigrid Hubloux
Sebastien Delagrangé

PHOTOGRAPHY

Enak Baert
(pp. cover, 4, 20, 22-24, 27, 38-41, 66, 72-79, 82-89, 93-95, 98, 106, 116-120, 122, 124-126)
Tim Van de Velde
(pp. 28-33, 123, 132-133, 136)
Herman Desmet
(p. 18)

GRAPHIC DESIGN

Luc Binst
Mathieu Cieters (Studio Studio, Ghent)
Fien Meelberghs (DIFT, Ghent)

PRINTER

Drukkerij Jo Vandenbulcke, Kortrijk

No part of this publication may be reproduced or published, by print, photocopy, microfilm, or any other means, without the prior permission of BINST ARCHITECTS.

Copyright © 2018 BINST ARCHITECTS and the author
Copyright © 2018 BINST ARCHITECTS and the photographers

www.binstarchitects.be

TEAM BINST ARCHITECTS

Andreas Porreye
Andries Daniels
Anke Vandenbempt
Anneleen Steurs
Bas Van Der Horst
Behzad Talebi
Ben Depuydt
Caro Vermeiren
Dirk Engelen
Dirk Hendriks
Edwin Remmerie
Enak Baert
Evi Van Schooneveld
Frederic Maurel
Gitte Anthonissen
Guy Mertens
Jan Geerts
Jasper De Roover
Joke Verstraete
Kenn Van Overveld
Kyra Van Dorst
Laure Denis
Liesbeth De Bock
Lotte De Witte

Luc Binst
Luc Reyn
Mathieu Cieters
Melissa Janssens
Mitra Rostami Gorji
Nick Verbeeck
Paul Van Den Bergh
Peggy De Bock
Petra Van Alsenoy
Philippe Vincke
Philippe De Pauw
Robert Osinga
Roxanne Delbaen
Ruth Poppe
Sebastien Delagrangé
Sigrid Hubloux
Slavinca Bosnjak
Stefan Schoonderbeek
Stephane Van Eester
Steven De Paepe
Sven van Loon
Thomas Cornelis
Vincent Kaptein
Ward Lagrain
Wim Heyninck
Yente Awouters
Zeno Claes

ARROW